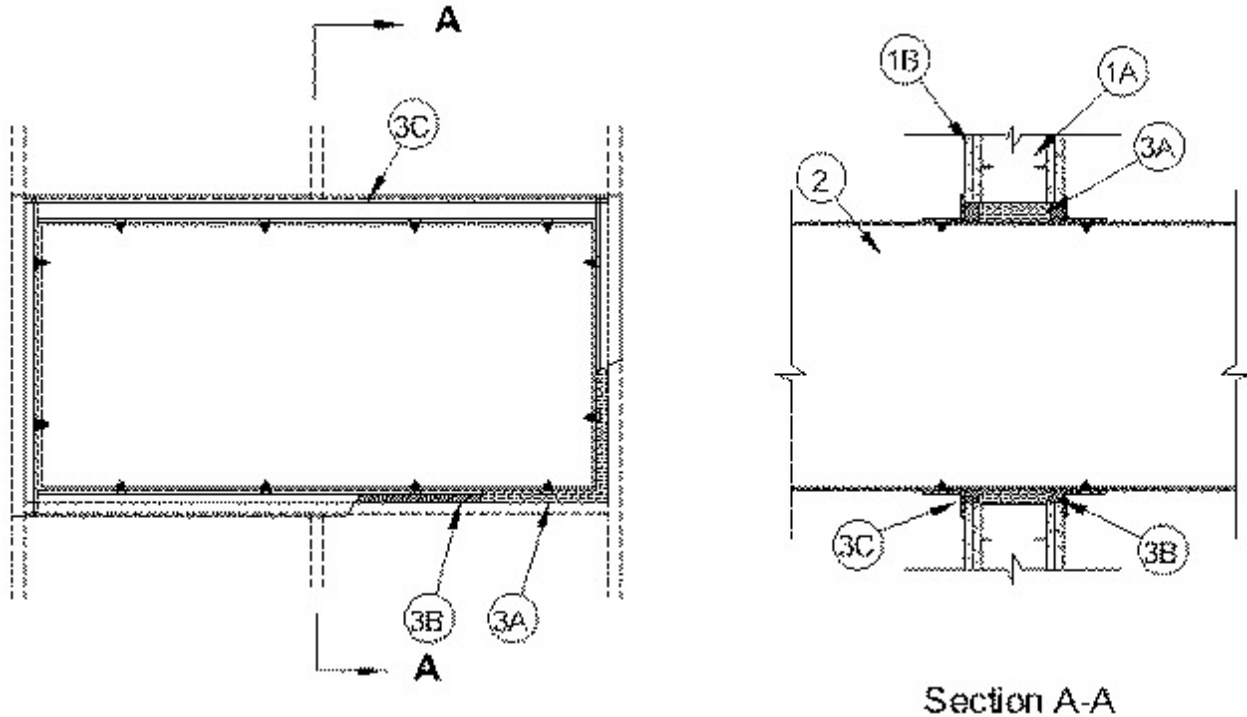


System No. W-L-7133

November 13, 2008

F Ratings — 1 and 2 Hr (See Item 1)

T Rating — 0 Hr



1. Wall Assembly — The 1 or 2 hr fire rated gypsum board/stud wall assembly shall be constructed of the materials and in the manner described in the individual U400 or V400 Series Wall and Partition Design in the UL Fire Resistance Directory and shall include the following construction features:

A. Studs — Wall framing shall consist of min 3-1/2 in. (89 mm) wide steel channel studs spaced max 24 in. (610 mm) OC. Additional steel studs shall be used to completely frame the opening.

B. Gypsum Board* — Min 5/8 in. (16 mm) thick, 4 ft (1.22 m) wide with square or tapered edges. The gypsum board type, thickness, number of layers, fastener type and sheet orientation shall be as specified in the individual U400 or V400 Series Design in the UL Fire Resistance Directory. Max area of opening is 27.1 ft² (2.52 m²) with a max dimension of 62-1/2 in. (1.59 m).

The hourly F Rating of the firestop system is equal to the hourly fire rating of the wall assembly in which it is installed.

2. Through-Penetrant* — Coated Duct — Rectangular or square coated steel air duct with a max perimeter dimension of 240 in. (6.10 m) and a max individual dimension of 60 in. (1.52 m). For coated round ducts, maximum diameter shall be 60 in. (1.52 m). For coated flat oval ducts, maximum size shall be 60 by 20 in. (1.52 by 0.51 mm). One duct to be installed concentrically or eccentrically within the firestop system. The annular space within the firestop system shall be min 1/2 in. (13 mm) to max of 2 in. (51 mm). Duct sections to be assembled as specified in Ventilation Duct Assembly No. 18. See Ventilation Duct Assemblies in Vol. 2 of the Fire Resistance Directory.

FIRESPRAY INTERNATIONAL LTD — FLAMEBAR BW11 FIRE RATED DUCTWORK

3. Firestop System — The firestop system shall consist of the following:

A. **Packing Material** — Min 3-3/4 and 5 in. (95 and 127 mm) thickness of min 6 pcf (96 kg/m³) mineral wool batt insulation firmly packed into opening as a permanent form for 1 and 2 hr fire rated wall assemblies, respectively. Packing material to be recessed from both surfaces of wall to accommodate the required thickness of fill material.

B. **Fill, Void or Cavity Material* — Sealant** — Min 1/2 in. (13 mm) thickness of fill material within the annulus, flush with from both surfaces of wall.

RECTORSEAL — BioStop 500+ Caulk

C. **Steel Retaining Angles** — Min 0.064 in. (1.55 mm) galv steel angle shall be sized to lap coated duct a min of 2 in. (51 mm) and to lap wall surface a min of 1 in. (25 mm). Angle shall be attached to coated duct with min No. 10 x 1/2 in. (13 mm) long steel sheet metal screws spaced a max of 6 in. (152 mm) OC with a max of 1 in. (25 mm) from each end of steel duct.

*Bearing the UL Classification Mark