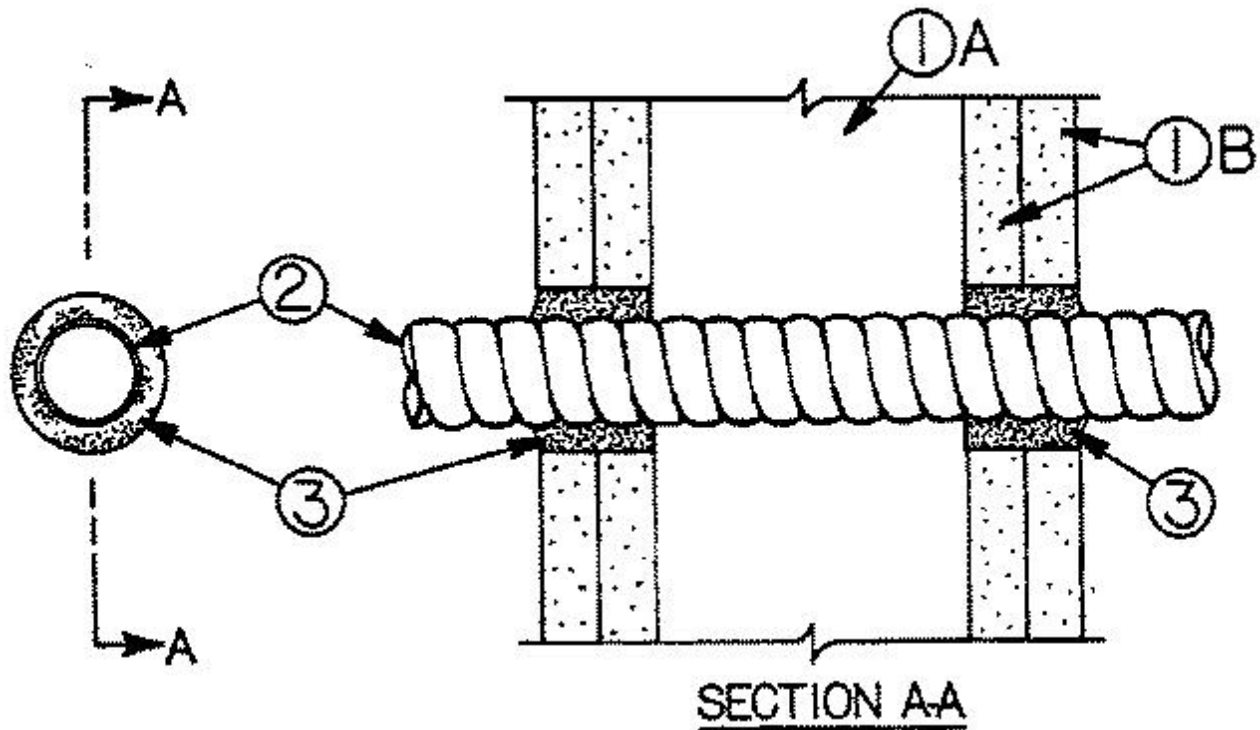


## System No. W-L-3128

January 07, 1999

F Rating — 2 Hr

T Rating — 0 Hr



1. **Wall Assembly** — The fire-rated gypsum wallboard/stud wall assembly shall be constructed of the materials and in the manner specified in the individual U300 or U400 Series Wall and Partition Designs in the UL Fire Resistance Directory and shall include the following construction features:

A. **Studs** — Wall framing may consist of either wood studs or steel channel studs. Wood studs to consist of nom 2 by 4 in. lumber spaced 16 in. OC. Steel studs to be min 2-1/2 in. wide and spaced max 24 in. OC.

B. **Gypsum Board\*** — Two layers of nom 5/8 in. thick gypsum wallboard, as specified in the individual Wall and Partition Design. Max diam of opening is 2 in.

2. **Through Penetrating Product\*** — Max four copper conductor No. 5 AWG (or smaller) aluminum or steel Metal-Clad Cable+ centered in opening. The annular space between metal-clad cable and periphery of opening is min 1/4 in. to max 3/4 in. Metal-clad cable to be rigidly supported on both sides of wall assembly.

### NORTHERN CABLES INC

3. **Fill, Void or Cavity Material\*** — **Caulk** — Min 1-1/4 in. thickness of fill material applied within the annulus, flush with both surfaces of wall.

RECTORSEAL — Biotherm 100

\*Bearing the UL Classification Mark