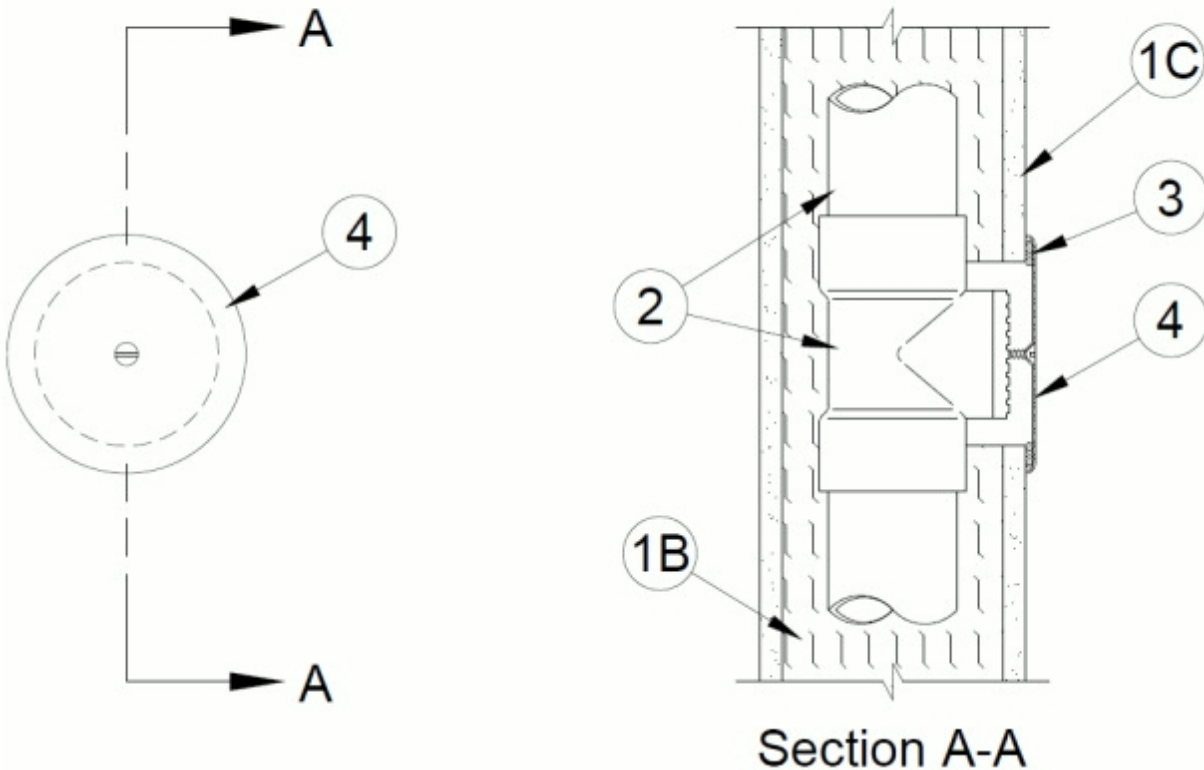


System No. W-L-2655

February 28, 2017

ANSI/UL1479 (ASTM E814)	CAN/ULC S115
F Rating — 1 Hr	F Rating — 1 Hr
T Rating —1 Hr	FT Rating —1 Hr
	FH Rating — 1 Hr
	FTH Rating —1 Hr

System No. W-L-2655



System tested with a pressure differential of 2.5 Pa between the exposed and the unexposed surfaces with the higher pressure on the exposed side.

1. Wall Assembly — The 1 hr fire-rated gypsum board/stud wall assembly shall be constructed of the materials and in the manner specified in the individual U300 Series Wall and Partition Designs in the UL Fire Resistance Directory and shall include the following construction features:

A. Studs — Wall framing to consist of nom 2 by 6 in. (51 by 152 mm) (or larger) wood studs or doubled or staggered nom 2 by 4 in. (41 by 102 mm) (or larger) wood studs spaced in accordance with the individual U300 Series Wall and Partition Designs.

B. Insulation* — R13 (or higher) glass fiber or mineral fiber batt insulation friction fitted into stud cavity.

C. Gypsum Board* — One layer of nom 5/8 in. (16 mm) thick gypsum board, as specified in the individual Wall and Partition Design. Max diam of opening is 5 in. (127 mm).

2. **Piping System** — One nom 3 in. (76 mm) diam (or smaller) Schedule 40 solid core or cellular core PVC pipe with PVC tee clean-out for use in closed (process or supply) or vented (drain, waste or vent) piping systems, installed within stud cavity. PVC clean-out to be located behind opening in gypsum board.

3. **Fill, Void or Cavity Material* - Putty** — A Min 1/4 in. (6 mm) thick by 3/4 in. (19 mm) wide strip of fill material applied completely around perimeter of opening under the cover plate

RECTORSEAL Metacaulk Fire Rated Putty, Biostop Fire Rated Putty.

4. **Cover Plate** — Min 6-1/2 in. (165 mm) diam 24 gauge (or heavier) stainless steel cover plate secured to PVC clean-out with stainless steel screw through center of plate. Cover plate to be tightened squarely to wall and shall overlap surface of gypsum board a min of 3/4 in. (19 mm) around entire perimeter of opening.

* Indicates such products shall bear the UL or cUL Certification Mark for jurisdictions employing the UL or cUL Certification (such as Canada), respectively.