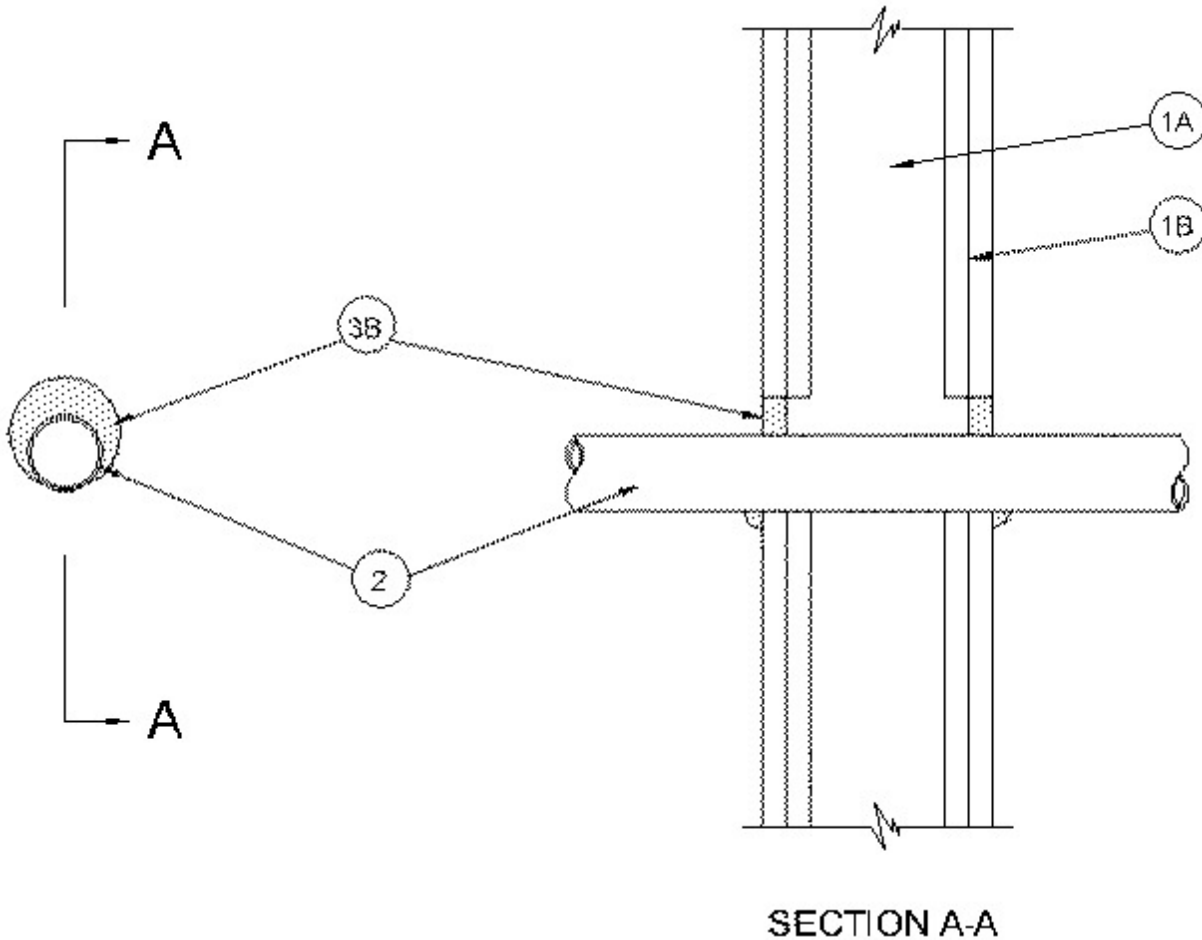


System No. W-L-2462

September 26, 2005

F Ratings — 1 and 2 Hr (See Item 1)

T Rating — 0 Hr



1. **Wall Assembly** — The 1 or 2 hr fire-rated gypsum wallboard/stud wall assembly shall be constructed of the materials and in the manner specified in the individual U300, U400 or V400 Series Wall and Partition Designs in the UL Fire Resistance Directory and shall include the following construction features:

A. **Studs** — Wall framing may consist of either wood studs or steel channel studs. Wood studs to consist of nom 2 by 4 in. (51 by 102 mm) lumber spaced 16 in. OC (406 mm). Steel studs to be min 2-1/2 in. (64 mm) wide and spaced max 24 in. OC (610 mm).

B. **Gypsum Board*** — The gypsum board type, thickness, number of layers and orientation shall be, as specified in the individual Wall and Partition Design. Max diam of opening is 3 in. (76 mm).

The hourly F Ratings of the firestop system are equal to the hourly fire rating of the wall assembly.

2. **Nonmetallic Pipe** — One nom 2 in. (51 mm) diam (or smaller) SDR 13.5 Chlorinated Polyvinyl Chloride (CPVC) pipe to be installed concentrically or eccentrically within the firestop system. The annular space shall be min 0 (point contact) to max 5/8 in. (16 mm). Pipe to be rigidly supported on both sides of wall assembly.

3. **Firestop System** — The firestop system shall consist of the following:

A. **Packing Material** — (Optional)— For 2 hr wall assemblies, foam backer rod firmly packed into opening as a permanent form. Packing material to be recessed from each surface of the

wall to accommodate the required thickness of fill material.

B. Fill Void or Cavity Materials* - Caulk — Min 5/8 in. (16 mm) thickness of fill material applied within the annulus on both surfaces of the wall assembly. A min 1/2 in. (13 mm) diam bead of caulk shall be applied to the pipe/gypsum board interface at the point contact location on both sides of wall.

RECTORSEAL — Biostop 350i

*Bearing the UL Classification Mark