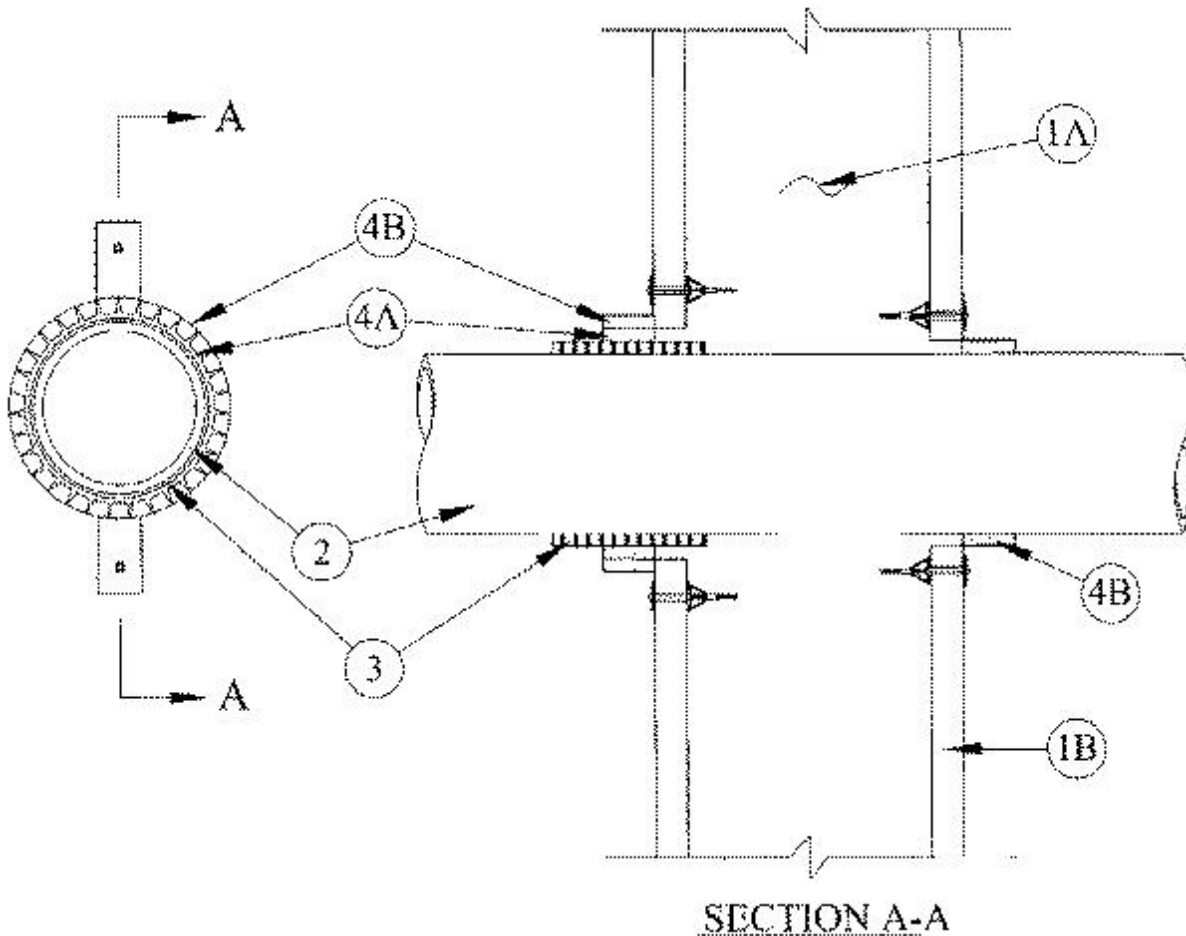


System No. W-L-2208

June 02, 2011

F Rating — 1 Hr

T Rating — 0 Hr



1. **Wall Assembly** — The 1 hr fire-rated gypsum board/stud wall assembly shall be constructed of the materials and in the manner specified in the individual U300, U400 or V400 Series Wall and Partition Designs in the UL Fire Resistance Directory and shall include the following construction features:

A. Studs — Wall framing shall consist of either wood or steel channel studs. Wood studs to consist of nom 2 by 4 in. (51 by 102 mm) lumber spaced 16 in. (406 mm) OC. Steel studs to be min 2-1/2 in. (64 mm) wide and spaced max 24 in. (610 mm) OC.

B. Gypsum Board* — Min 5/8 in. (16 mm) thick, 4 ft (1.2 m) wide with square or tapered edges. The gypsum board type, thickness, number of layers and orientation shall be as specified in the individual Wall and Partition Design. Max diam of opening is 4-1/2 in. (114 mm).

2. **Through Penetrants** — One nonmetallic pipe to be centered within the firestop system. A nom annular space of 1/4 in. (6 mm) is required within the firestop system. Pipe to be rigidly supported on both sides of wall assembly. The following types and sizes of nonmetallic pipes may be used:

A. Polyvinyl Chloride (PVC) Pipe — Nom 3 in. (76 mm) diam (or smaller) Schedule 40 solid or cellular core PVC pipe for use in closed (process or supply) or vented (drain, waste or vent) piping systems.

B. Chlorinated Polyvinyl Chloride (CPVC) Pipe — Nom 3 in. (76 mm) diam (or smaller) SDR17 or Schedule 40 CPVC pipe for use in closed (process or supply) piping systems.

Schedule 40 CPVC pipe for use in vented (drain, waste or vent) piping systems.

3. **Pipe Coupler** — Nom 3 in. (76 mm) diam (or smaller) pipe coupler, made of the same material as the pipe, installed at on one side of wall. Pipe coupler to be installed such that it coincides with the firestop device (Item 4B).

4. **Firestop System** — The firestop system shall consist of the following:

A. **Fill, Void or Cavity Material*** — **Wrap Strip** — Nom 1/4 in. (6 mm) thick by 1 in. (25 mm) wide intumescent wrap strip tightly wrapped around the outer circumference of the pipe coupler. Wrap strip secured with tape or tie wire.

RECTORSEAL — Biostop Wrap Strip or FlameSafe Wrap Strip

B. **Firestop Device*** — Firestop device consists of a galv steel collar lined with an intumescent material sized to fit specific diam of the through penetrant. Device to be installed around through penetrant, or through penetrant, wrap strip and pipe coupler in accordance with accompanying installation instructions. On side of wall without pipe coupler, nom size of device shall be equal to nom diam of pipe. On side of wall containing pipe coupler, nom size of device shall be 1 in. (25 mm) larger than the nom diam of pipe. Device incorporates anchor tabs for securement to both surface of wall by means of No. 10 by 1-1/2 in. (38 mm) laminate screws or 1/8 in. (3.2 mm) diam by 2 in. (51 mm) long hollow wall anchors. Device to be secured at each tab.

RECTORSEAL — Biostop Pipe Collar or FlameSafe Pipe Collar

*Bearing the UL Classification Mark