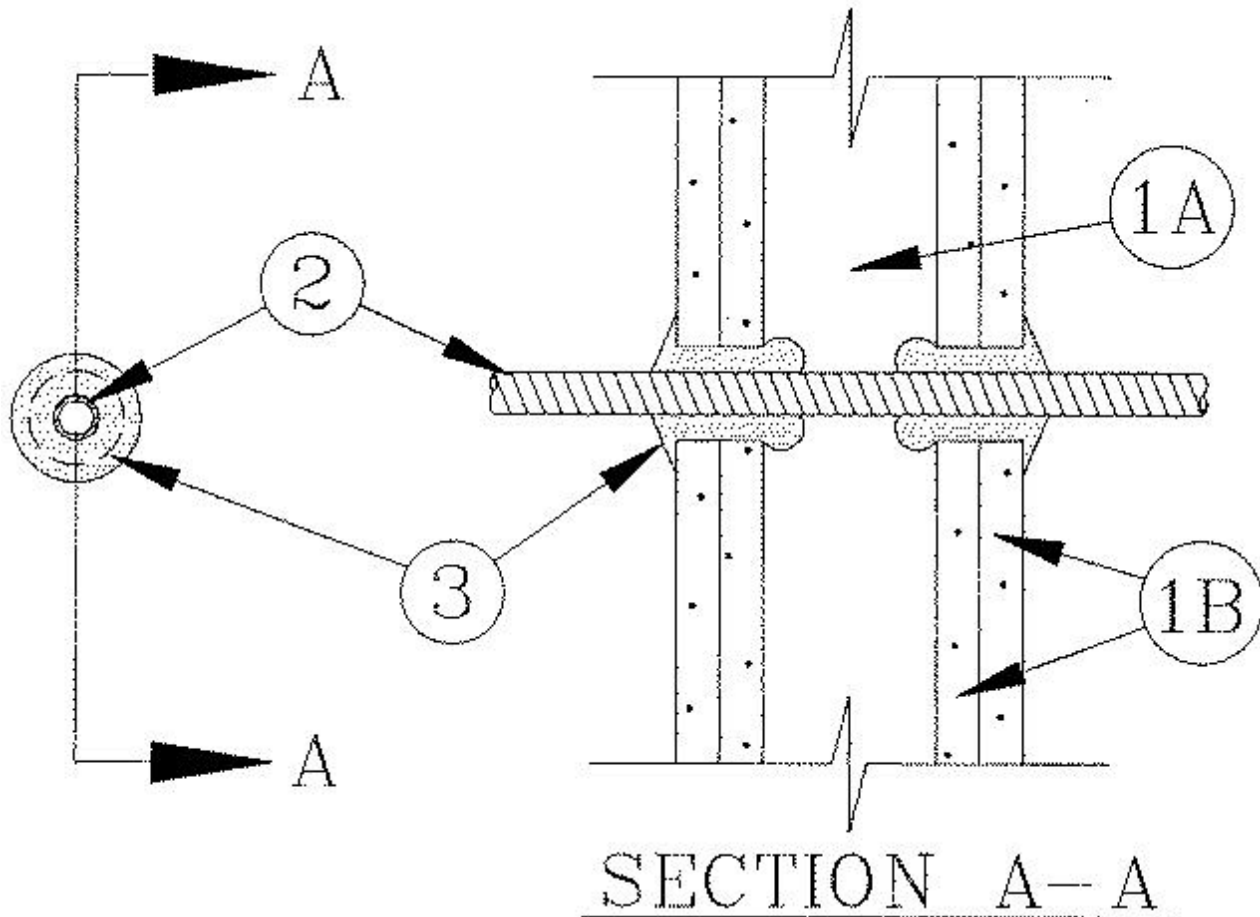


### System No. W-L-1046

July 16, 2014

ANSI/UL1479 (ASTM E814)	CAN/ULC S115
F Ratings - 1 and 2 Hr (See Item 1)	F Ratings - 1 and 2 Hr (See Item 1)
T Rating - 1/2 Hr	FT Rating - 1/2 Hr
	FH Ratings - 1 and 2 Hr (See Item 1)
	FTH Rating - 1/2 Hr



**1. Wall Assembly** — The 1 or 2 hr fire-rated gypsum board/stud wall assembly shall be constructed of the materials and in the manner specified in the individual U300 or U400 Series Wall and Partition Designs in the UL Fire Resistance Directory and shall include the following construction features:

**A. Studs** — Wall framing may consist of either wood studs or steel channel studs. Wood studs to consist of nom 2 by 4 in. lumber spaced 16 in. OC. Steel studs to be min 2-1/2 in. wide and spaced max 24 in. OC.

**B. Gypsum Board\*** — 5/8 in. thick, 4 ft wide with square or tapered edges. The gypsum board type, thickness, number of layers, fastener type and sheet orientation shall be as specified in the individual U300 or U400 Series Design in the UL Fire Resistance Directory. Max diam of opening is 1-3/8 in.

**The hourly F Rating of the firestop system is equal to the hourly fire rating of the wall assembly in which it is installed.**

**2. Through-Penetrating Product\*** — Nom 1/2 in. diam (or smaller) aluminum or steel **Flexible Metal Conduit+** installed in accordance with the National Electrical Code (NFPA No. 70). The annular space shall be min 1/8 in. to a max 1/4 in.

Conduit to be rigidly supported on both sides of wall assembly.

### **INTERNATIONAL METAL HOSE CO**

**3. Fill, Void or Cavity Material\* — Sealant** — Fill material applied to completely fill the annular space between the through-penetrating product and the periphery of the opening to max extent possible. In 2 hr fire-rated assemblies, additional fill material to be installed such that a min 3/8 in. crown is formed around the penetrating item and lapping 1/2 in. beyond the periphery of the opening. In 1 hr fire-rated assemblies, additional fill material to be installed such that a min 1 in. crown is formed around the penetrating item and lapping a min 1/2 in. beyond the periphery of the opening.

**RECTORSEAL** — Types FS900, FS901, FS903, FS903CG, FS905, FS905CG, FS929, FS1900, FS1901, FS1905, FS1929, FST901, FST903 and FST905 Sealant or FS900+, FS901+CG, FS905+CG, FS929+ and FS955+CG Elastomeric Sealant, Metacaulk MC 150+, Biostop BF 150+

+Bearing the UL Listing Mark

\*Bearing the UL Classification Marking