

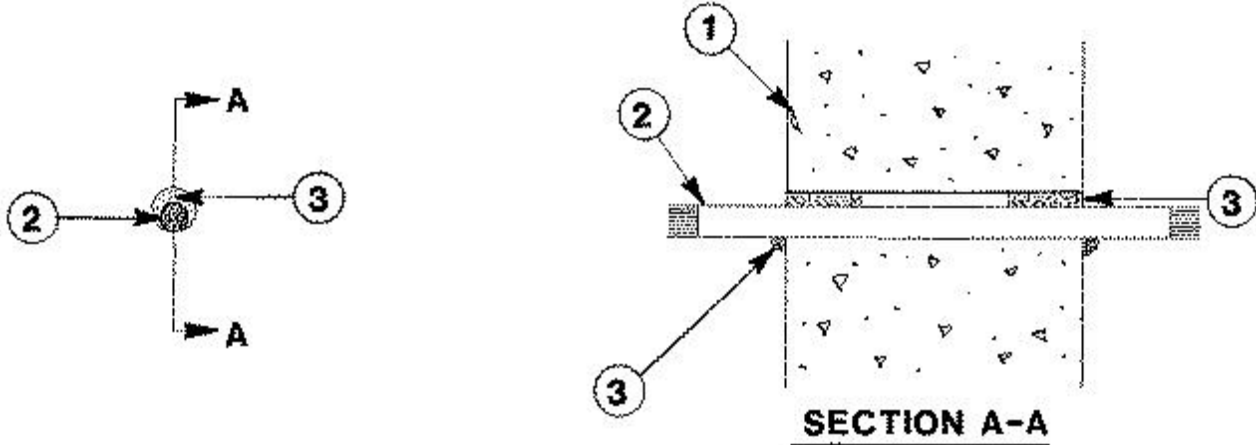


System No. W-J-3029

November 26, 1997

F Rating — 2 Hr

T Ratings — 1/4 and 1-1/2 Hr (See Item 2)



1. **Wall Assembly** — Min 5 in. thick reinforced lightweight or normal weight (100-150 pcf) concrete. Wall may also be constructed of any UL Classified **Concrete Blocks***. Diam of circular through opening to be min 1/4 in. to max 5/16 in. larger than diam of cable (Item 2).

See **Concrete Blocks** (CAZT) category in the Fire Resistance Directory for names of manufacturers.

2. **Cables** — One cable to be installed either concentrically or eccentrically within the Firestop System. The annular space shall be min 0 in. to max 5/16 in. Cable to be rigidly supported on both sides of wall assembly. The following types and sizes of copper conductor cables may be used:

A. Max 300 kcmil (or smaller) power cable with polyvinyl chloride (PVC) insulation and nylon jacket. The T Rating is 1/4 hr if the power cable is used.

B. Max 3/C with ground-No. 10 AWG (or smaller) Type NM cable with PVC insulation and jacket. The T Rating is 1-1/2 hr if the Type NM cable is used.

3. **Fill, Void or Cavity Material*** — **Caulk** — Min 1-1/4 in. thickness of fill material applied within the annulus, flush with both surfaces of wall. At the point contact location between cable and concrete, a min 1/2 in. diam bead of fill material shall be applied at the concrete/cable interface on both surfaces of wall.

RECTORSEAL — Biotherm 100

*Bearing the UL Classification Mark