

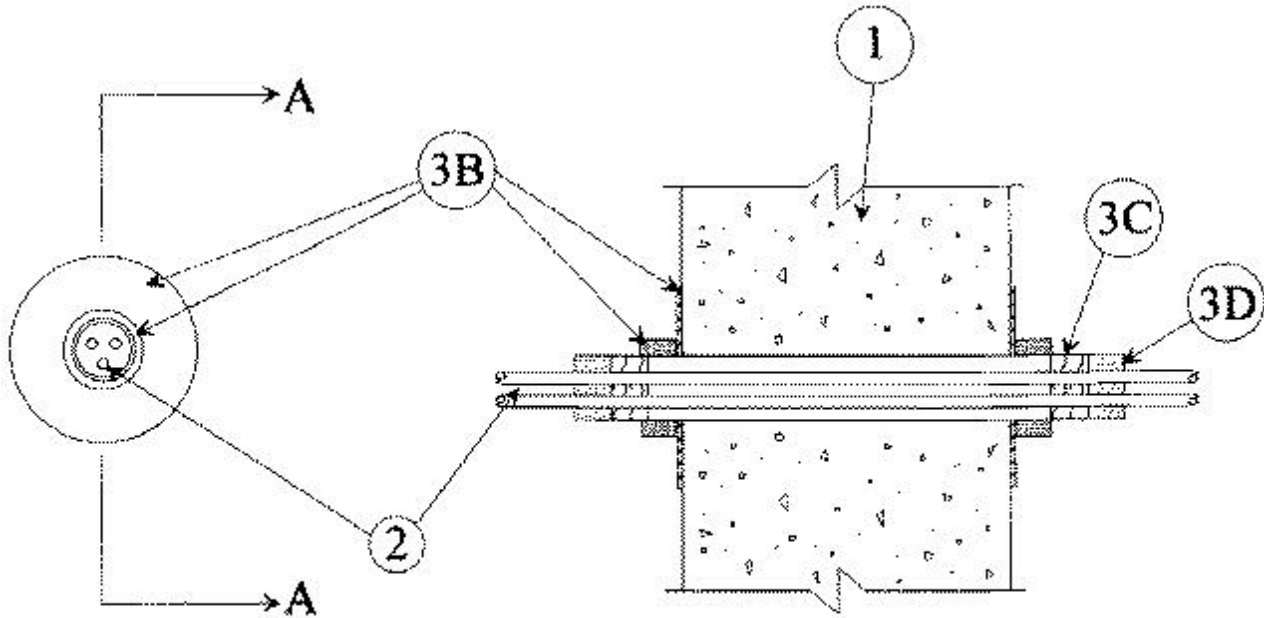


### System No. W-J-3027

April 30, 1998

F Rating — 2 Hr

T Rating — 0 Hr



### SECTION A-A

1. **Wall Assembly** — Min 5 in. thick reinforced lightweight or normal weight (100-150 pcf) concrete. Wall may also be constructed of any UL Classified **Concrete Blocks\***. Max diam of opening is 4-1/2 in.

See **Concrete Blocks** (CAZT) category in the Fire Resistance Directory for names of manufacturers.

2. **Cables** — Aggregate cross-sectional area of cables in firestop device to be 36 percent of the aggregate cross-sectional area of device. Cables to be rigidly supported on both sides of wall assembly. Any combination of the following types and sizes of copper conductor cable may be used:

- A. Max 300 kcmil single conductor Type MTW, THHN, THWN or AWM power cables; cross-linked polyethylene (XLPE) insulation.
- B. Max 4 pair No. 24 AWG telephone cable intended for plenum applications.
- C. Max 3/C No. 12 AWG with polyvinyl chloride (PVC) insulation and jacket.

3. **Firestop System** — The firestop system shall consist of the following:

A. **Fill, Void or Cavity Material\* — Caulk** — (Not Shown) Min 3/8 in. diam of caulk applied around the perimeter of the opening on each side of the wall.

**RECTORSEAL** — Biostop 500+

B. **Firestop Device** — Smooth steel sleeve device incorporating flat washers secured by sliding compression couplers. Device shall be installed in accordance with the accompanying installation instructions. Device provided in nom 1, 2 and 4 in. sizes. Max diam of opening in

wall for 1, 2 and 4 in. sizes are 1-1/8, 2-1/4 and 4-1/2 in., respectively.

**UNIQUE FIRE STOP PRODUCTS INC** — Smooth Sleeve

C. **Packing Material** — Min 1 in. thickness of min 4.0 pcf mineral wool batt insulation firmly packed into firestop device as a permanent form. Packing material to be recessed from each end of firestop device as required to accommodate the required thickness of fill material.

D. **Fill, Void or Cavity Material\*** — **Putty** — Min 1 in. thickness of fill material applied within the firestop device, flush with both ends.

**RECTORSEAL** — Biostop Fire Rated Putty

\*Bearing the UL Classification Mark