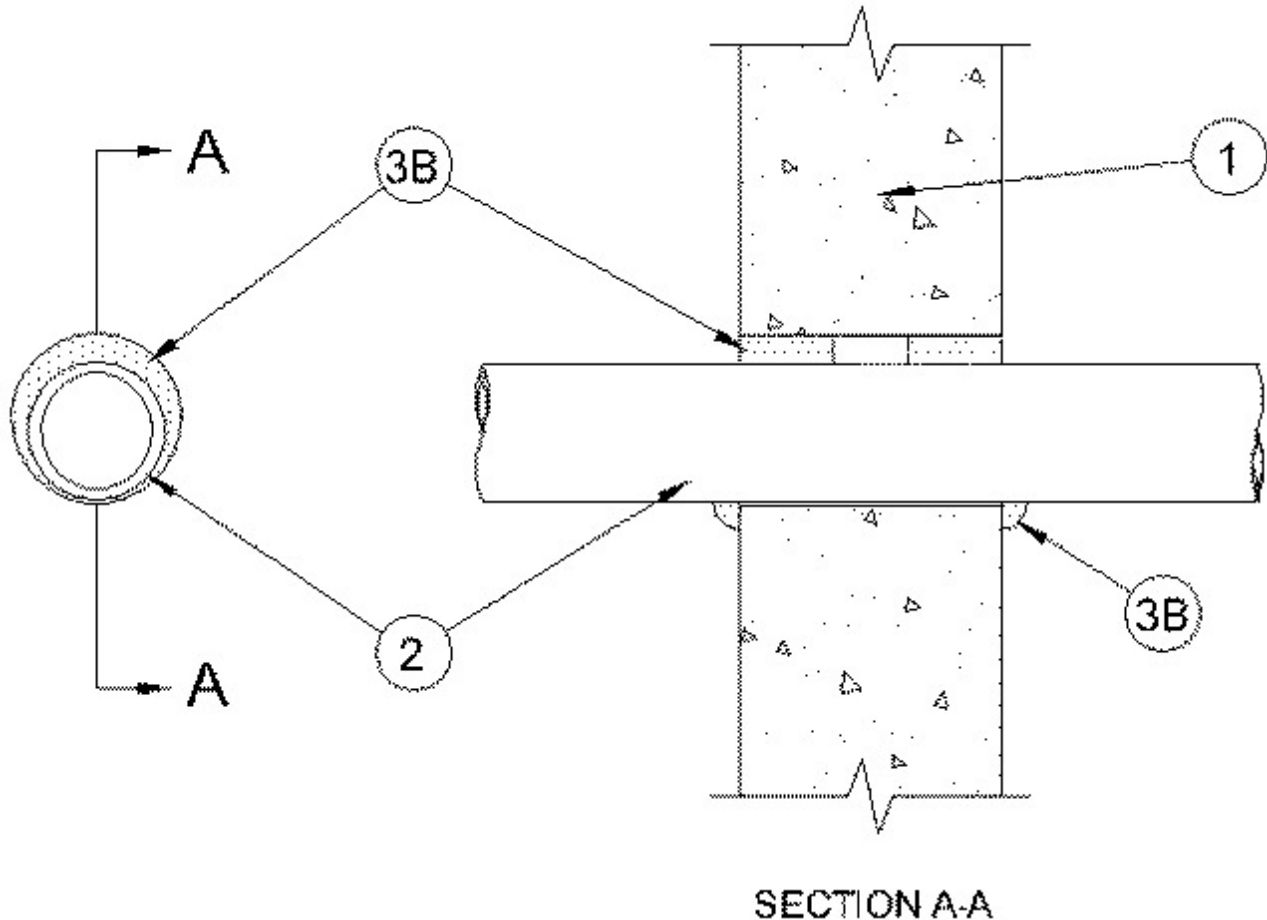


System No. W-J-2202

September 26, 2005

F Rating — 2 Hr

T Rating — 0 Hr



1. **Floor or Wall Assembly** — Min 4-1/2 in. (114 mm) thick reinforced lightweight or normal weight (100-150 pcf or 1600-2400 kg/m³) concrete. Wall may also be constructed of any UL Classified **Concrete Blocks***. Max diam of opening is 3 in. (76 mm).

2. **Nonmetallic Pipe** — One nom 2 in. (51 mm) diam (or smaller) SDR 13.5 Chlorinated Polyvinyl Chloride (CPVC) pipe for use in closed (process or supply) or vented (drain, waste or vent) piping systems. Pipe to be installed concentrically or eccentrically within the firestop system. The annular space shall be min 0 (point contact) to max 5/8 in. (16 mm). Pipe to be rigidly supported on both sides of wall assembly.

3. **Firestop System** — The firestop system shall consist of the following:

A. **Packing Material** — (Optional) - Foam backer rod firmly packed into opening as a permanent form. Packing material to be recessed from each surface of the wall to accommodate the required thickness of fill material.

B. **Fill Void or Cavity Materials* - Caulk** — Min 5/8 in. (16 mm) thickness of fill material applied within the annulus on both surfaces of the wall assembly. A min 1/2 in. (13 mm) diam bead of caulk shall be applied to the pipe/gypsum board interface at the point contact location on both sides of wall.

RECTORSEAL — Biostop 350i

*Bearing the UL Classification Mark