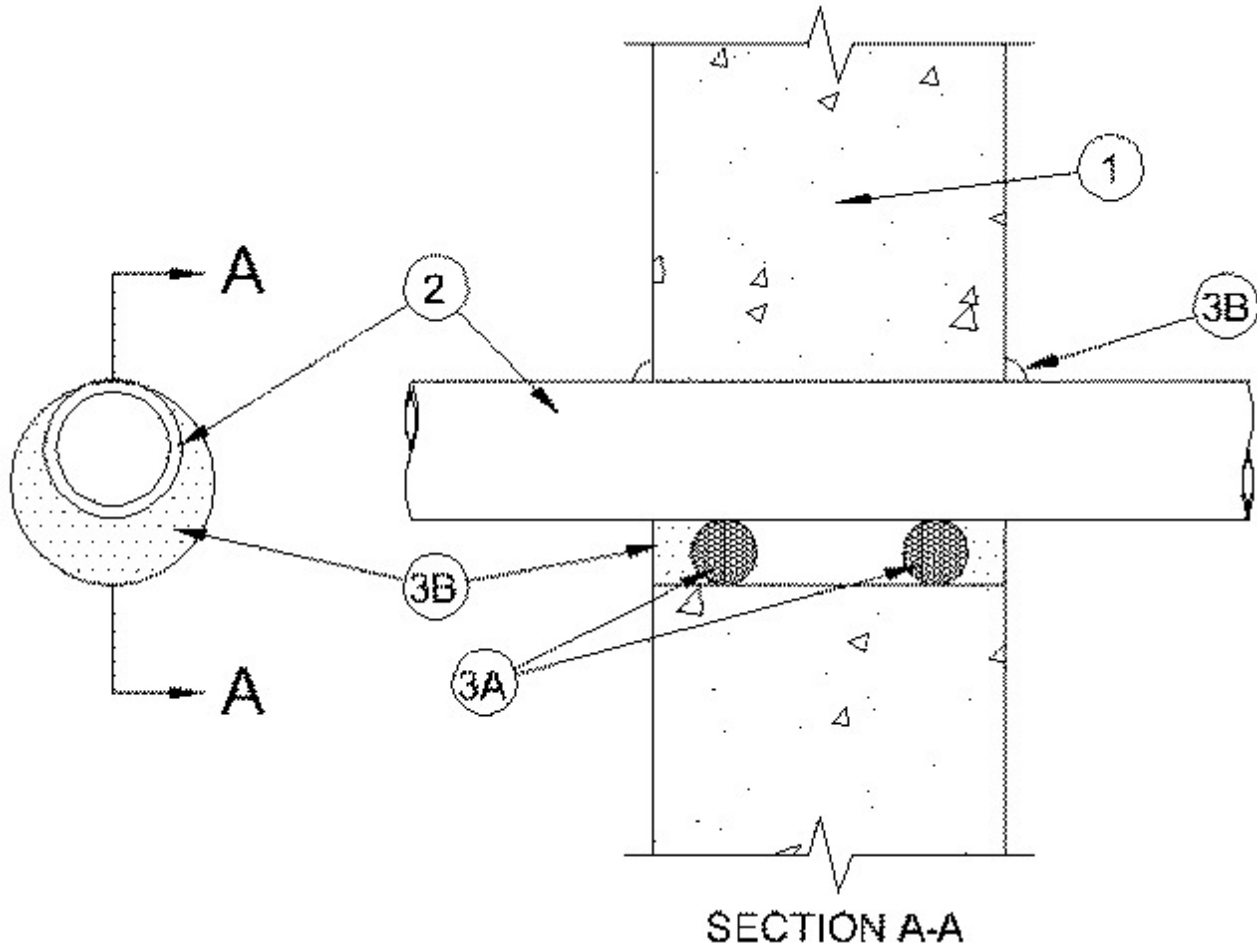


## System No. W-J-2201

September 26, 2005

F Rating — 2 Hr

T Rating — 2 Hr



1. **Wall Assembly** — Min 6 in. (152 mm) thick lightweight or normal weight (100-150 pcf or 1600-2400 kg/m<sup>3</sup>) concrete. Wall may also be constructed of any UL Classified **Concrete Blocks**\*. Max diam of opening is 3-5/8 in. (92 mm).

See **Concrete Blocks** (CAZT) category in the Fire Resistance Directory for names of manufacturers.

2. **Nonmetallic Pipe** — One non-metallic pipe to be installed concentrically or eccentrically within the firestop system. The annular space shall be min 0 (point contact) to max 1-1/4 in. (32 mm). Pipe or tubing to be rigidly supported on both sides of wall assembly. The following types and sizes of non-metallic pipes or tubing may be used:

A. **Polyvinyl Chloride (PVC) Pipe** — Nom 2 in. (51 mm) diam (or smaller) Schedule 40 solid core or cellular core PVC pipe for use in closed (process or supply) or vented (drain, waste or vent) piping systems.

B. **Chlorinated Polyvinyl Chloride (CPVC) Pipe** — Nom 2 in. (51 mm) diam (or smaller) SDR 13.5 CPVC pipe for use in closed (process or supply) piping systems.

C. **Electrical Non-Metallic Tubing (ENT)** — Nom 2 in. (51 mm) diam (or smaller) PVC tubing installed in accordance with the National Electrical Code (NFPA 70).

D. **Cross Linked Polyethylene (PEX) Tubing** — Nom 1 in. (25 mm) diam (or smaller) SDR 9 PEX tubing for use in closed (process or supply) piping systems.

3. **Firestop System** — The firestop system shall consist of the following:

A. **Packing Material** — Foam backer rod firmly packed into opening as a permanent form. Packing material to be recessed from each surface of the wall to accommodate the required thickness of fill material.

B. **Fill Void or Cavity Materials\* — Caulk** — Min 5/8 in. (16 mm) thickness of fill material applied within the annulus on both surfaces of the wall assembly. A min 1/2 in. diam bead of caulk shall be applied to the pipe/concrete interface at the point contact location on both sides of wall.

**RECTORSEAL** — Biostop 350i

\*Bearing the UL Classification Mark