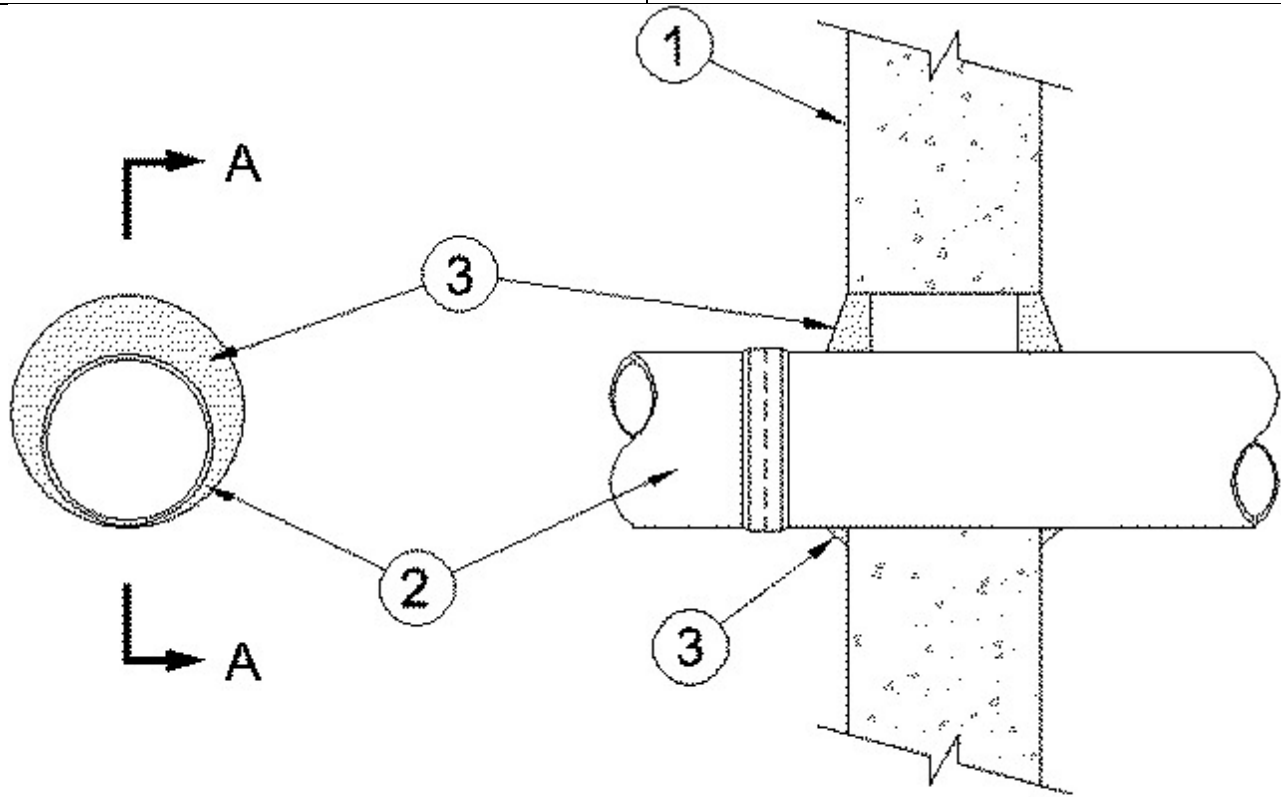




System No. W-J-2086

July 15, 2014

ANSI/UL1479 (ASTM E814)	CAN/ULC S115
F Ratings - 2 Hr	F Ratings - 2 Hr
T Ratings - 0 Hr	FT Ratings - 0 Hr
L Rating At Ambient - Less Than 1 CFM/sq ft	FH Ratings - 2 Hr
L Rating At 400 F - Less Than 1 CFM/sq ft	FTH Ratings - 0 Hr
W Rating — Class 1	L Rating At Ambient - Less Than 1 CFM/sq ft
	L Rating At 400 F - Less Than 1 CFM/sq ft



SECTION 'A-A'

1. **Wall Assembly** — Min 6 in. (152 mm) thick normal weight or lightweight (100-150 pcf or 1600-2400 kg/m³) concrete. Wall may also be constructed of any UL Classified Concrete Blocks*. Max diam of opening is 8 in. See **Concrete Blocks** (CAZT) category in the Fire Resistance Directory for names of manufacturers.

2. **Through Penetrating Products* - Glass Pipe** — Nom 6 in. (152 mm) diam (or smaller) glass pipe installed concentrically or eccentrically in opening, for use in closed (process or supply) or vented (drain, waste or vent) piping systems. The annular space between pipe and periphery of opening shall be min 0 in. to max 1-3/8 in. (35 mm). Pipe to be rigidly supported on both sides of wall assembly. Pipe connections to be located a min 3 in. (76 mm) from wall surfaces.

The max diam of the glass pipe permitted within the firestop system is dependent upon the type of fill material (Item 3) used as shown in Item 3.

SCHOTT NORTH AMERICA INC

3. **Fill, Void, or Cavity Materials* - Sealant** — Min thickness of 5/8 in. (16 mm) applied within the annulus between pipe and periphery of the opening, flush with both surfaces of wall assembly. Additional sealant to be applied such that a min ¼ in. (6 mm) crown is formed around the through penetrant on both surfaces of wall.

The max diam of the glass pipe permitted within the firestop system is dependent upon the type of fill material as shown in the table below:

RECTORSEAL

Type of Fill Material	Max Diam of Glass Pipe, in. (mm)
FlameSafe® FS 900+	6 (152)
FlameSafe® FS1900	4 (102)

RECTORSEAL — FlameSafe® FS1900, FlameSafe® FS900+, Metacaulk MC 150+, Metacaulk 1000, Metacaulk 350i, Biostop BF 150+, Biostop 350i or Biostop 500+

* Indicates such products shall bear the UL or cUL Certification Mark for jurisdictions employing the UL or cUL Certification (such as Canada), respectively.