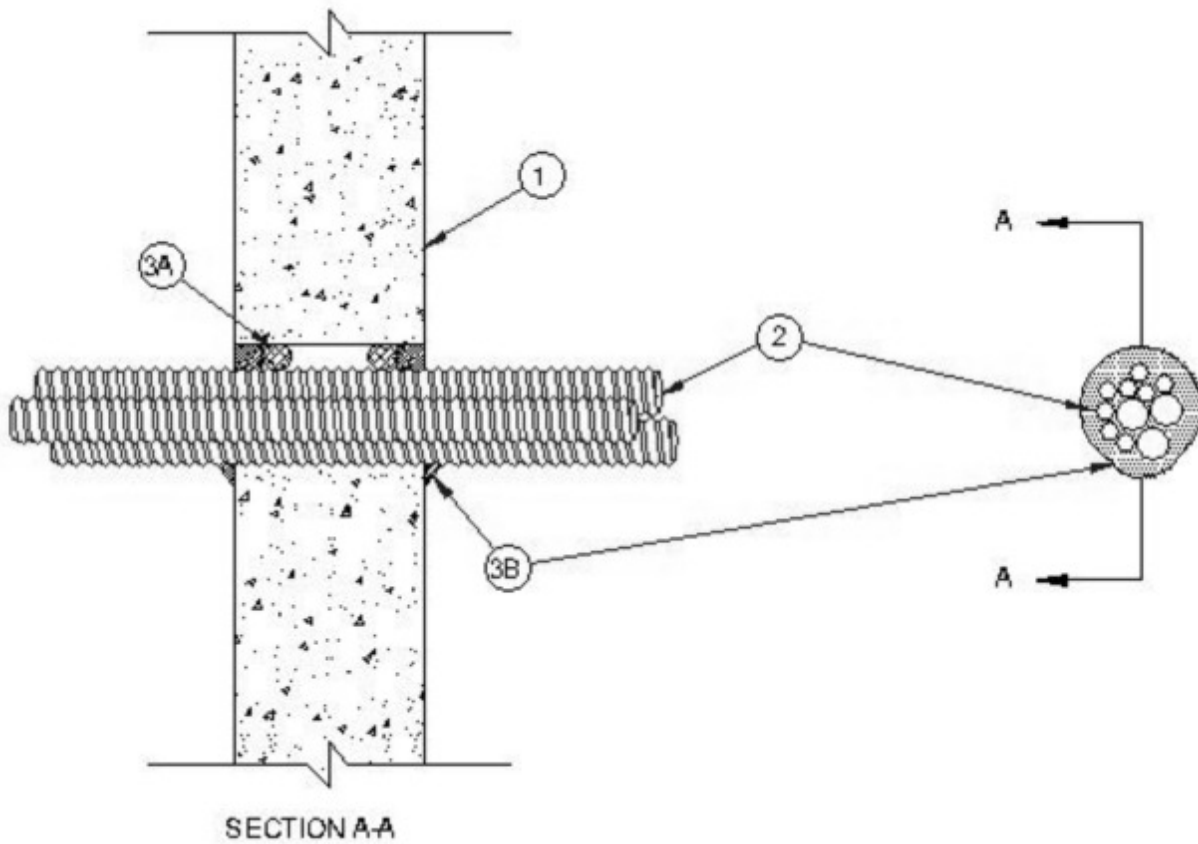




**System No. W-J-1206**

July 15, 2014

ANSI/UL1479 (ASTM E814)	CAN/ULC S115
F Rating — 1 and 2 Hr (See Item 1)	F Rating — 1 and 2 Hr (See Item 1)
T Rating — 3/4 and 1-1/2 Hr (See Item 1)	FT Rating — 3/4 and 1-1/2 Hr (See Item 1)
L Rating At Ambient — Less Than 1 CFM/sq ft	FH Rating — 1 and 2 Hr (See Item 1)
L Rating At 400 F — Less Than 1 CFM/sq ft	FTH Rating — 3/4 and 1-1/2 Hr (See Item 1)



1. **Wall Assembly** — Min 4-7/8 in. (124 mm) and 6-1/8 in. (156 mm) thick normal weight or lightweight (100-150 pcf or 1600-2400 kg/m<sup>3</sup>) concrete for 1 and 2 hr rated assemblies, respectively. Wall may also be constructed of any UL Classified **Concrete Blocks**\*. Max diam of opening is 6 in. (152 mm).

See **Concrete Blocks** (CAZT) category in the Fire Resistance Directory for names of manufacturers.

The hourly Ratings of the firestop system are dependent on the hourly fire rating of the wall assembly in which it is installed as shown in the table below:

Rating of Wall, Hr	F and FH Ratings, Hr	T, FT and FTH Ratings, Hr
2	2	1-1/2
1	1	3/4

**2. Through Penetrating Product\* - Flexible Metal Piping** — One or more nom 1-1/4 in. (32 mm) diam (or smaller) flexible metal gas piping installed concentrically or eccentrically within opening. Annular space between penetrants and periphery of opening to be min 0 in. (0 mm) to max 2 in. (50 mm). Space between penetrants shall be min 0 in. (0 mm) to max 2 in. (50 mm). Penetrants to be rigidly supported on both sides of wall.

**GASTITE, DIV OF TITEFLEX**

**OMEGA FLEX INC** — CSST or FlashShield CSST

**WARD MFG L L C**

**3A. Packing Material** — In 2 Hr rated walls assemblies, foam backer rod firmly packed into opening as permanent form. Packing material to be recessed from both wall surfaces as required in accommodate the required thickness of fill material.

**3B. Fill, Void or Cavity Materials\* — Caulk or Sealant** — Min 5/8 in. (16 mm) thickness of caulk applied within annulus, flush with both surfaces of wall. Min 1/2 in. (13 mm) diam bead of caulk applied to concrete/penetrant interface at point contact location on both sides of wall.

**RECTORSEAL** — FlameSafe® FS900+, FS1900, Metacaulk MC 150+, Metacaulk 1000, Metacaulk 350i, Biostop BF 150+, Biostop 350i or Biostop 500+

\* Indicates such products shall bear the UL or cUL Certification Mark for jurisdictions employing the UL or cUL Certification (such as Canada), respectively.