

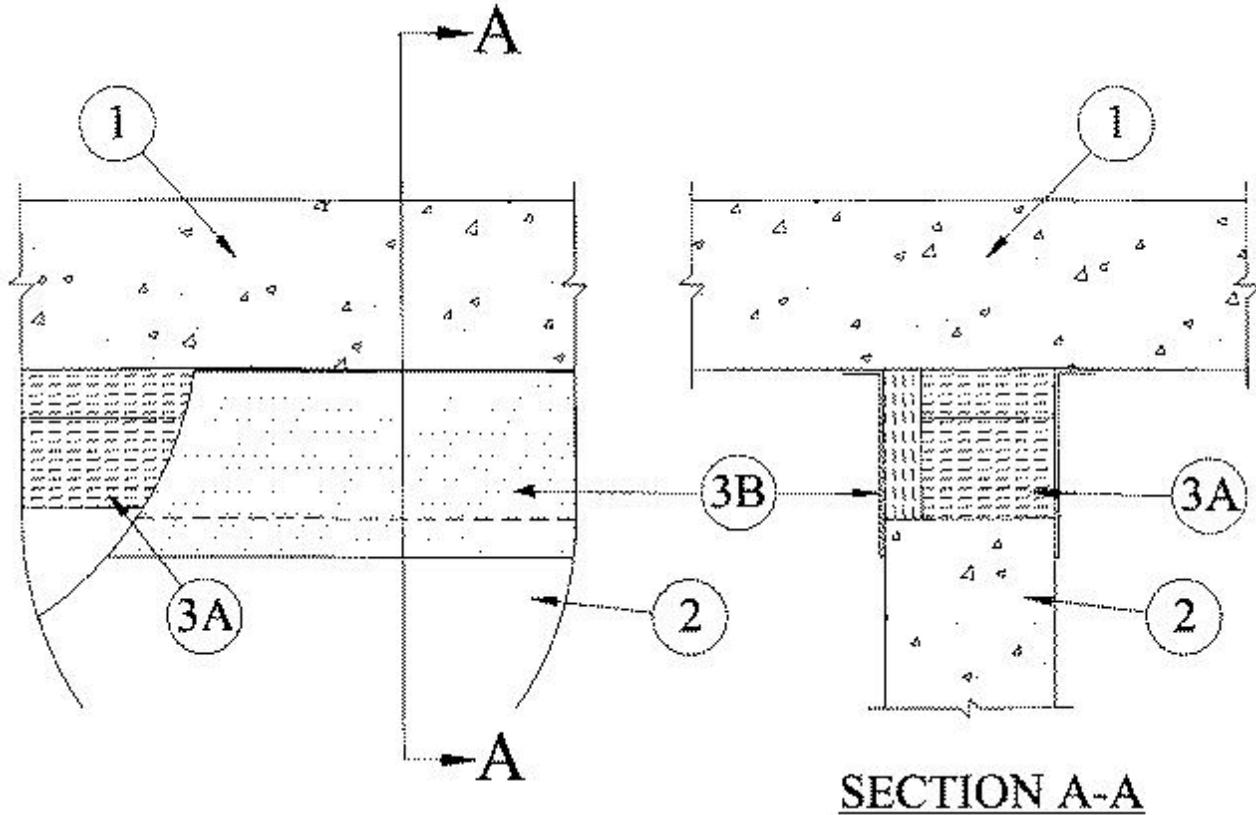
System No. HW-D-1023

April 17, 2001

Assembly Rating — 2 Hr

Nominal Joint Width — 4 In.

Class II and III Movement Capabilities — 20% Compression or Extension



1. **Floor Assembly** — Min 4-1/2 in. thick reinforced lightweight or normal weight (100-150 pcf) structural concrete.

2. **Wall Assembly** — Min 7-3/8 in. thick reinforced lightweight or normal weight (100-150 pcf) structural concrete. May also be constructed of any UL Classified **Concrete Blocks***.

See **Concrete Blocks** (CAZT) category in the Fire Resistance Directory for names of manufacturers.

3. **Joint System** — Max separation between bottom of floor and top of wall at time of installation of joint system is 4 in. The joint system is designed to accommodate a max 20 percent compression or extension from its installed width. The joint system shall consist of the following:

A. **Forming Material*** — Min 4 pcf density mineral wool batt insulation installed in joint opening as a permanent form. Pieces of batt cut to a min width of 6-5/8 in. and installed edge-first into joint opening, parallel with joint direction, such that batts sections are compressed 33 percent in thickness and such that the compressed batt sections are flush with one surface of wall and recessed 1 in. from the other surface of wall. Additional 1 in. thick pieces of batt are placed vertically within the remaining void. The 1 in. thick batts are cut approx 50 percent wider than the joint opening width, compressed and installed within the opening, flush with surface of wall. Adjoining lengths of batt to be tightly-butted with butted seams spaced min 24 in. apart along the length of the joint.

B. Fill, Void or Cavity Material* — Min 1/8 in. wet thickness of fill material sprayed or trowelled on each side of wall to completely cover mineral wool forming material and to overlap a min of 1 in. onto wall and floor on both sides of wall.

RECTORSEAL — Biostop 750 Spray, Biostop 750 Caulk Grade

*Bearing the UL Classification Mark