



(800) 231-3345 www.biofireshield.com

Copyright - 2008 Underwriters Laboratories Inc.

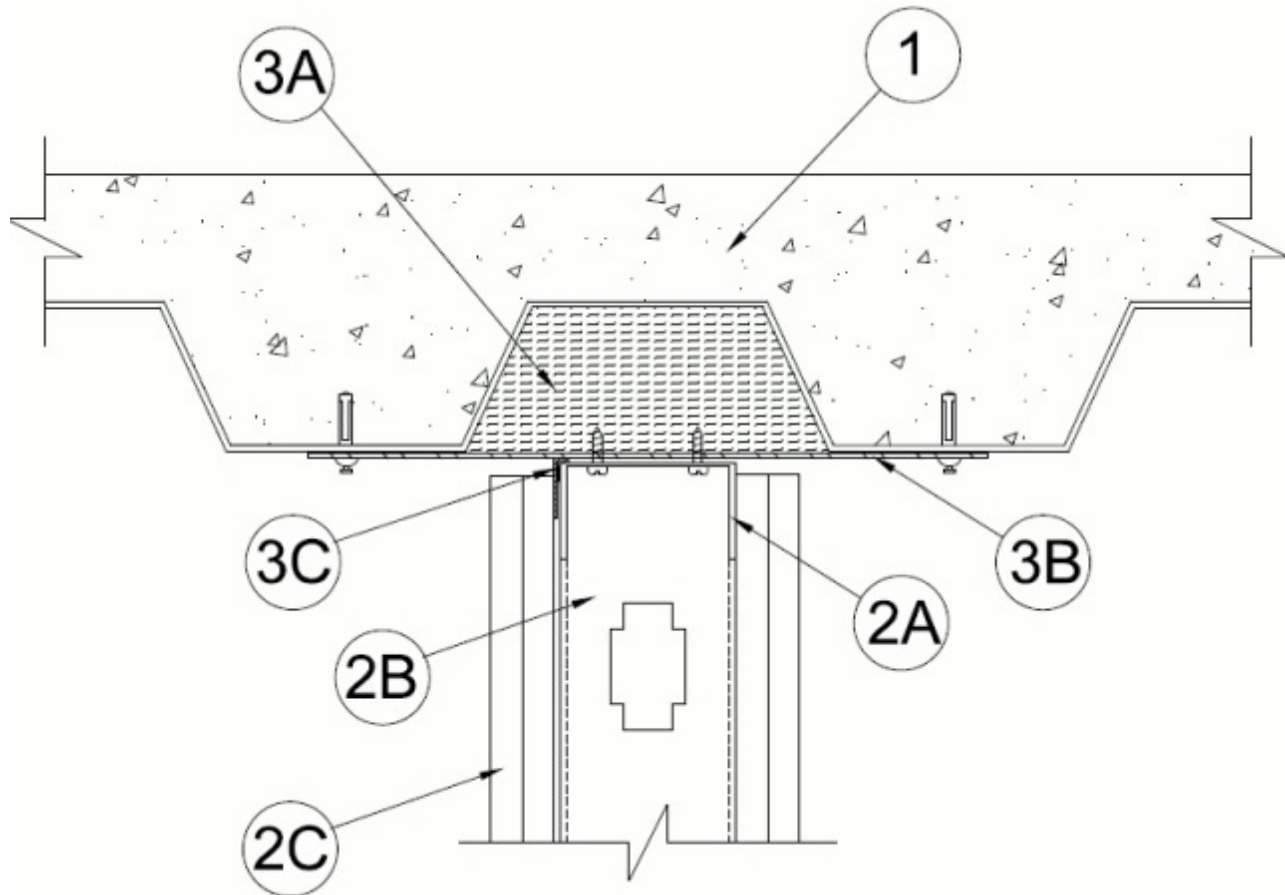
Reprinted from the 2008 Fire Resistance Directory with permission from Underwriters Laboratories Inc.



System No. HW-D-0714

October 24, 2013

ANSI/UL2079	CAN/ULC S115
Assembly Rating — 1 and 2 Hr (See Item 2)	F Ratings — 1 and 2 Hr (See Item 2)
Nominal Joint Width - 1/2 in. or 1 in.	FT Ratings — 1 and 2 Hr (See Item 2)
Class II or III Movement Capabilities — 100% Compression or Extension for Nom 1/2 In. Joint; 100% Compression or 0% Extension for Nom 1 In. Joint	FH Ratings — 1 and 2 Hr (See Item 2)
L Rating at Ambient — Less than 1 CFM/Lin Ft	FTH Ratings — 1 and 2 Hr (See Item 2)
L Rating at 400°F — Less than 1 CFM/Lin Ft	Nominal Joint Width - 1/2 in. or 1 in.
	Class II or III Movement Capabilities — 100% Compression or Extension for Nom 1/2 in. Joint; 100% Compression or 0% Extension for Nom 1 in. Joint
	L Rating at Ambient — Less than 1 CFM/Lin Ft
	L Rating at 400°F — Less than 1 CFM/Lin Ft



1. **Floor Assembly** — The fire-rated fluted steel floor unit/concrete floor assembly shall be constructed of the materials and in the manner described in the individual D900 Series Floor-Ceiling Design in the Fire Resistance Directory and shall include the following construction features:

A. **Steel Floor And Form Units*** — Max 3 in. (76 mm) deep galv steel fluted floor units.

B. Concrete — Min 2-1/2 in. (64 mm) thick reinforced lightweight or normal weight (100-150 pcf or 1600-2400 kg/m³) concrete, as measure from the top plane of the floor units.

2. Wall Assembly — The 1 or 2 hr fire rated gypsum board/stud wall assembly shall be constructed of the materials and in the manner described in the individual U400 or V400 Series Wall and Partition Design in the UL Fire Resistance Directory and shall include the following construction features:

A. Steel Floor and Ceiling Runners — Channel shaped ceiling runner with width to accommodate studs, legs of min 2 in. (51 mm), and fabricated from min 24 MSG galv steel. Ceiling runner installed offset and parallel to steel deck direction. Floor runners of wall assembly shall consist of min No. 25 ga galv steel channels sized to accommodate the steel studs. Floor runner to be provided with min 1-1/4 in. (32mm) flanges. Floor runner to be attached to steel deck with steel fasteners spaced a max of 24 in. (610 mm) O.C. Ceiling runner attached to steel strap (Item 3B) with steel fasteners spaced a max 24 in. (610 mm) OC with two fasteners into each strap.

B. Studs — Steel studs to be min 3-5/8 in. (92 mm) wide. Studs cut 3/4 to 1 in. (19 to 25 mm) less in length than assembly height with bottom nesting in and secured to floor runner. Steel studs nested in ceiling runner without attachment. Studs spaced max 24 in. (610 mm) OC.

C. Gypsum Board* — Gypsum board 5/8 in. (16 mm) thick, applied on both sides of wall as specified in the individual Wall and Partition Design except that a max 1 in. (25 mm) gap shall be maintained between the top of the gypsum board and the bottom of the floor assembly. The screws attaching the gypsum board to the studs along the top of the wall shall be located 3 to 3-1/2 in. (76 to 89 mm) down from deck at time of installation. No gypsum board attachment screws shall be driven into the ceiling runner.

The hourly fire rating and the F, FT, FH and FTH ratings of the joint system are equal to the hourly fire rating of the wall.

3. Joint System — Max separation between bottom of floor and top of gypsum board (at time of installation of joint system) is 1 in. (25 mm). The joint system is designed to accommodate a max 100 percent compression or extension from its installed width for nom 1/2 in. joint. The joint system is designed to accommodate a max 100 percent compression or 0% extension from its installed width for nom 1 in. joint. The joint system shall consist of the following:

A. Forming Material* — Min 4 pcf (64 kg/m³) mineral wool batt insulation cut to the shape of the fluted deck, approx 33 percent larger than the area of the flutes and compressed into the fluted area of the steel floor or roof deck above the ceiling channel.

See **Forming Material** (XHKU) category in the Fire Resistance Directory for names of manufacturers.

A1. Forming Material*-Plugs — (Not Shown) - As an alternate to the forming material Item 3A, mineral wool plugs preformed to the shape of the fluted floor units or roof deck, may be used within the flutes. Plugs shall be friction fitted to completely fill the flutes.

ROCK WOOL MANUFACTURING CO — Delta Deck Plugs

B. Steel Straps — Min 2 in. (51 mm) wide 16 MSG galv steel straps cut to a length to span the flute and overlap the adjacent valleys of fluted floor units by 1-1/2 in. (38 mm). Straps spaced max 24 in. (610 mm) OC and fastened to floor assembly with one min 1-1/4 in. long steel fastener at each end.

C. Fill, Void or Cavity Material* — Min 25 ga composite steel angle with one 5/8 in. (16 mm) leg and one 1-1/2 in (38 mm) leg with an intumescent strip affixed along the inside 1-1/2 in (38 mm) leg. The 5/8 in. leg of steel angle is friction fit between the top web of the ceiling runner and the steel straps. Steel angle is required on one side of wall only.

RECTORSEAL — Track Safe

D. Fill, Void or Cavity Material* — (Not Shown) - Min 1/8 in. (3 mm) wet thickness (min 1/16 in. or 1.6 mm dry thickness) of fill material spray applied or brushed over the forming material in flutes (Item 3A or 3A1) on one side of wall. Fill material to overlap min 1/2 in. (13 mm) onto steel floor or roof deck, steel straps (Item 3B) and steel angle (Item 3C).

RECTORSEAL — Metacaulk 1200 Spray, Metacaulk 1500 Spray, Biostop 750 Spray, Biostop 800 Spray, FS 3000 Spray

*Bearing the UL Classification Mark