

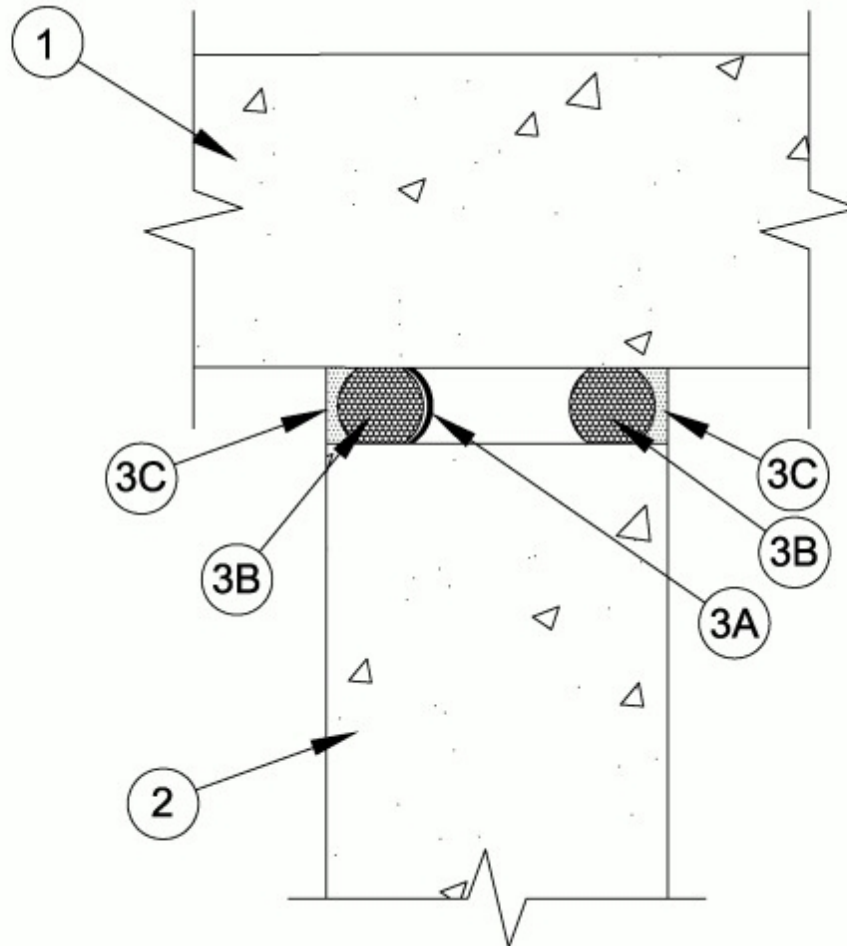
## System No. HW-D-0651

September 14, 2011

Assembly Ratings — 3 and 4 Hr (See Item 3)

Nominal Joint Width — 2 In.

Class II Movement Capabilities — 15% Compression and Extension



**1. Floor Assembly** — Min 6 in. (152 mm) thick reinforced lightweight or normal weight (100-150 pcf or 1600-2400 kg/m<sup>3</sup>) structural concrete.

**The hourly fire rating of the floor assembly shall be equal or greater than the hourly fire rating of the wall assembly.**

**2. Wall Assembly** — Min 6 in. (152 mm) thick reinforced lightweight or normal weight (100-150 pcf or 1600-2400 kg/m<sup>3</sup>) structural concrete. Wall may also be constructed of any UL Classified **Concrete Blocks\***.

See **Concrete Blocks** (CAZT) category in the Fire Resistance Directory for names of manufacturers.

**3. Joint System** — Max separation between bottom of floor and top of wall (at time of installation of joint system) is 2 in. (51 mm) for 3 hr rated assemblies and 1-1/2 in. (38 mm) for 4 hr rated assemblies. The joint system is designed to accommodate a max 15 percent compression or extension from its installed width. The joint system shall consist of the following:

**A. Fill, Void or Cavity Material\*** — Nom 0.08 in. (2 mm) thick strips of intumescent material faced on one side with an elastomeric backing strip. Strip is formed into a "U-shape" along its length and friction fit into joint opening. For nom 1-1/4 to 2 in. (32 to 51 mm) wide joint

openings, strip installed such that the base of the "U" is recessed to accommodate the packing material (Item 3B) and the required thickness of fill material (Item 3B) from one surface (either side) of wall. For nom 1/4 to 1 in. (6 to 25 mm) wide joint openings, strip installed at approximate mid-depth of wall. The required joint strip width for the various joint widths is shown in the following table:

Nom Joint Width, In. (mm)	Joint Strip Width, In. (mm)	Assembly Rating, Hr
1/4 to 3/8 (6-10)	3/4 (19)	3
1/2 to 5/8 (13-16)	1 (25)	3
3/4 to 1 (19-25)	1-1/2 (38)	3
1-1/4 to 1-1/2 (32-38)	2-1/2 (64)	3
1-3/4 to 2 (45-51)	3 (76)	3
1-1/2 (38)	2-1/2 (64)	4

**RECTORSEAL** — Metacaulk Joint Strip, Biostop Joint Strip or FlameSafe Joint Strip

**B. Packing Material** — Foam backer rod firmly packed into opening as a permanent form. Packing material to be recessed from each surface of wall to accommodate the required thickness of fill material.

**C. Fill, Void or Cavity Material\*** — Min 1/4 in. (6 mm) thickness of fill material applied within the joint, flush with each surface of wall.

**RECTORSEAL** — Metacaulk 1000, 150+, 350i, 835+, 1200, Biostop 500+, 150+, 350i, 100, 800, 750, FlameSafe 900+, 1900, 4000.

**BASF CONSTRUCTION CHEMICAL L L C** — Sonolastic NP-1 or Sonolastic NP-2

**SIKA CORPORATION** — Sikaflex 2C NS

**PECORA CORP** — Dynatrol II

\*Bearing the UL Classification Mark