



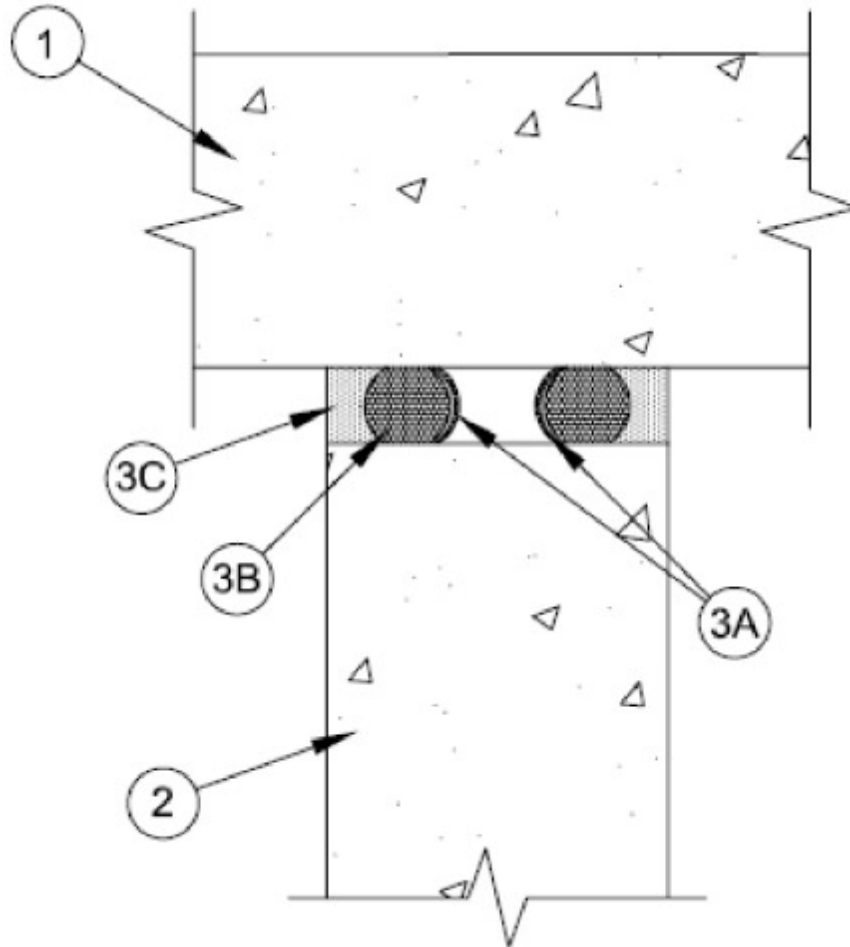
System No. HW-D-0608

March 09, 2011

Assembly Ratings — 2, 3 and 4 Hr (See Items 1, 2 and 3A)

Joint Width — 1 In. Max

Class II and III Movement Capabilities — 25% Compression and Extension



1. **Floor Assembly** — Reinforced lightweight or normal weight (100-150 pcf or 1600-2400 kg/m³) structural concrete. Min 6 in. (152 mm) thick floor for 3 and 4 hr Assembly Rating. Min 4-1/2 in. (102 mm) thick floor for 2 hr Assembly Rating.

The hourly fire rating of the floor assembly shall be equal or greater than the hourly fire rating of the wall assembly.

2. **Wall Assembly** — Reinforced lightweight or normal weight (100-150 pcf or 1600-2400 kg/m³) structural concrete. Min 6 in. (152 mm) thick wall for 3 and 4 hr Assembly Rating. Min 4-1/2 in. (102 mm) thick wall for 2 hr Assembly Rating. Wall may also be constructed of any UL Classified **Concrete Blocks***.

See **Concrete Blocks** (CAZT) category in the Fire Resistance Directory for names of manufacturers.

The hourly fire rating of the joint system is equal to the hourly fire rating of the wall assembly.

3. **Joint System** — Max separation between bottom of floor and top of wall (at time of installation of joint system) is 1 in. (25 mm). The joint system is designed to accommodate a max 25 percent compression or extension from its installed width. The joint system shall consist of the following:

A. Fill, Void or Cavity Material* — Nom 1/16 in. (1.6 mm) thick by 1-1/2 in. (38 mm) wide strips of intumescent material faced on one side with an elastomeric backing strip. Strips are formed into a "U-shape" along its length and friction fit into joint opening such that the base of the "U" is recessed approximately 1-11/16 in. (43 mm) from each surface of wall. For a 2 hr Assembly Rating, strip may be located at one side of joint, recessed approximately 1-11/16 in. (43 mm) from one surface of wall. Nom 1/16 in. (1.6 mm) thick by 1 in. (25 mm) wide intumescent strips may be used in max 3/4 in. (19 mm) wide joints in the same manner as above.

RECTORSEAL — Biostop Joint Strip or Flamesafe Joint Strip

B. Packing Material — Foam backer rod firmly packed into opening as a permanent form. Packing material to be recessed from each surface of wall to accommodate the required thickness of fill material.

C. Fill, Void or Cavity Material* — Min 1/2 in. (13 mm) thickness of fill material applied within the joint, flush with each surface of wall.

BASF CONSTRUCTION CHEMICAL L L C — Sonolastic NP-1 Caulk

SIKA CORPORATION — Sikaflex 2C NS

*Bearing the UL Classification Mark