



System No. HW-D-0328

September 04, 2015

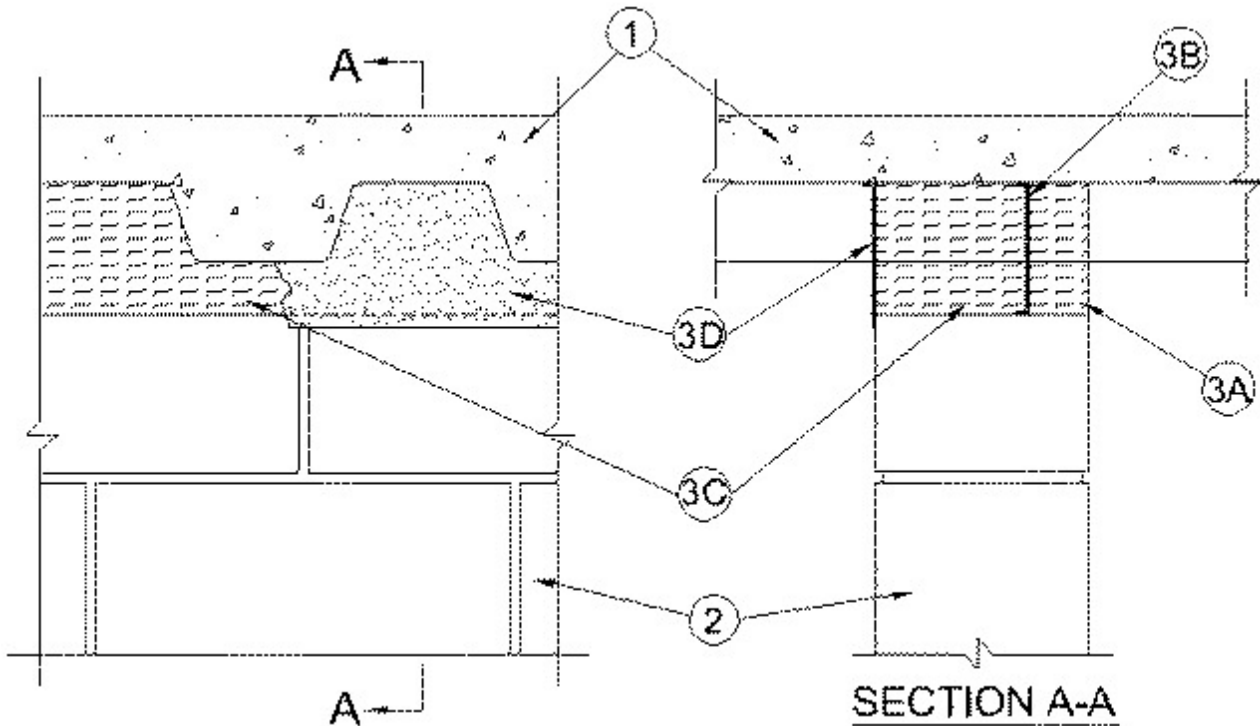
Assembly Rating — 2 and 3 Hr (See Item 3A1)

Nominal Joint Width — 2 In.

Class II Movement Capabilities — 12.5% Compression or Extension

L Rating At Ambient - Less Than 1 CFM/Lin Ft

L Rating At 400 F - Less Than 1 CFM/Lin Ft



1. Floor Assembly — The fire rated fluted steel unit/concrete floor assembly shall be constructed of the materials and in a manner described in the individual D900 Floor-Ceiling Design in the UL Fire Resistance Directory and shall include the following construction features:

A. Steel Floor and Form Units* — Max 3 in. (76 mm) deep galv steel fluted floor units.

B. Concrete — Min 2-1/2 in. (64 mm) thick reinforced concrete as measured from top plane of the floor units.

1A. Roof Assembly — (Not Shown) — As an alternate to the floor assembly, a fire rated fluted steel deck roof assembly may be used. The roof assembly shall be constructed of the materials in the manner describe in the individual P900 Series Roof-Ceiling Design in the UL Fire Resistance Directory. The hourly rating of the roof assembly shall be equal to or greater than the hourly rating of the wall assembly. The roof assembly shall include the following construction features:

A. Steel Roof Deck — Max 2 in. (51 mm) deep galv steel fluted roof deck.

B. Roof Insulation — Min 2-1/4 in. (57 mm) thick poured insulating concrete, as measured from the top plane of the floor units.

2. Wall Assembly — Min 8 in. (203 mm) thick steel-reinforced lightweight or normal weight (100-150 pcf or 1600-2400 kg/m³) structural concrete. Wall may also be constructed of any UL Classified **Concrete Blocks***.

See **Concrete Blocks** (CAZT) category in the Fire Resistance Directory for names of manufacturers.

3. Joint System — Max separation between bottom of floor or roof and top of wall at time of installation of joint system is 2 in. (51 mm) The joint system is designed to accommodate a max 12.5 percent compression or extension from its installed width. The joint system shall consist of the following:

A. Forming Material — Nom pcf (64 kg/m³) mineral wool batt insulation, min 2 in. (51 mm) wide, compressed and firmly packed to fill the flutes and the gap between the top of the wall and bottom of the floor or roof as a permanent form on one side of the wall. Batt insulation cut to the shape of the fluted steel deck, approx 33 percent larger than the flutes. Pieces compressed and installed cut edge first into the flutes above the top of the wall. Additional pieces of batt insulation, min 2 in. (51 mm) wide, installed edge-first into joint opening between bottom of fluted steel deck and top of wall, parallel with joint direction, such that batt sections are compressed min 50 percent in thickness. Compressed batt sections are flush with one surfaces of wall. Adjoining lengths of batt to be tightly butted with butted seams spaced min 48 in. (1.22 m) apart along the length of the joint.

IIG MINWOOL L L C — MinWool-1200 Safing

ROCK WOOL MANUFACTURING CO — Delta Safing Board

ROCKWOOL MALAYSIA SDN BHD — SAFE

ROXUL INC — SAFE

THERMAFIBER INC — SAF

A1. Fill, Void or Cavity Material* — Plugs — (Not Shown) — As an alternate to the forming material (Item 3A), mineral wool plugs preformed to the shape of the fluted floor units, may be used within the flutes. Plugs shall be friction fit to completely fill the flutes above the ceiling channel. The plugs shall project beyond each side of the ceiling runner, flush with wall surfaces. Additional forming material, described in Item 3A, to be used in conjunction with the plugs to fill the gap between the top of gypsum board and bottom of steel floor units or roof deck. **The Assembly Rating is 2 hr when Plugs are used.**

ROCK WOOL MANUFACTURING CO — Delta Deck Plugs

B. Fill, Void or Cavity Material* — Min 1/8 in. (3.2 mm) wet thickness or 1/16 in. (1.6 mm) dry wet thickness of fill material sprayed or troweled into the joint to completely cover mineral wool forming material and to overlap a min of 1/2 in. (13 mm) onto wall and steel deck, within joint cavity.

RECTORSEAL — FlameSafe FS3000 Spray, Metacaulk 1200, 1500 or Biostop 750, 800 Spray

C. Forming Material — Nom pcf (64 kg/m³) mineral wool batt insulation, min 6 in. (152 mm) wide, compressed and firmly packed to completely fill the flutes and the gap between the top of the wall and bottom of the floor or roof as a permanent form. Batt insulation cut to the shape of the fluted steel deck, approx 33 percent larger than the flutes. Pieces compressed and installed cut edge first into the flutes above the top of the wall. Additional pieces of batt insulation, min 6 in. (152 mm) wide, installed edge-first into joint opening between bottom of fluted steel deck and top of wall, parallel with joint direction, such that batt sections are compressed min 50 percent in. thickness. Compressed batt sections are flush with one surface of wall. Adjoining lengths of batt to be tightly butted with butted seams spaced min 48 in. (1.22 m) apart along the length of the joint.

IIG MINWOOL L L C — MinWool-1200 Safing

ROCK WOOL MANUFACTURING CO — Delta Safing Board

ROCKWOOL MALAYSIA SDN BHD — SAFE

ROXUL INC — SAFE

THERMAFIBER INC — SAF

D. Fill, Void or Cavity Material* — Min 1/8 in. (3.2 mm) wet thickness or 1/16 in. (1.6 mm) dry thickness of fill material sprayed or troweled on one side of the wall to completely cover mineral wool forming material and to overlap a min of 1/2 in. (13 mm) onto wall and steel deck on accessible side of wall.

RECTORSEAL — FlameSafe FS3000, Metacaulk 1200, 1500 or Biostop 750, 800 Spray

* Indicates such products shall bear the UL or cUL Certification Mark for jurisdictions employing the UL or cUL Certification (such as Canada), respectively.