

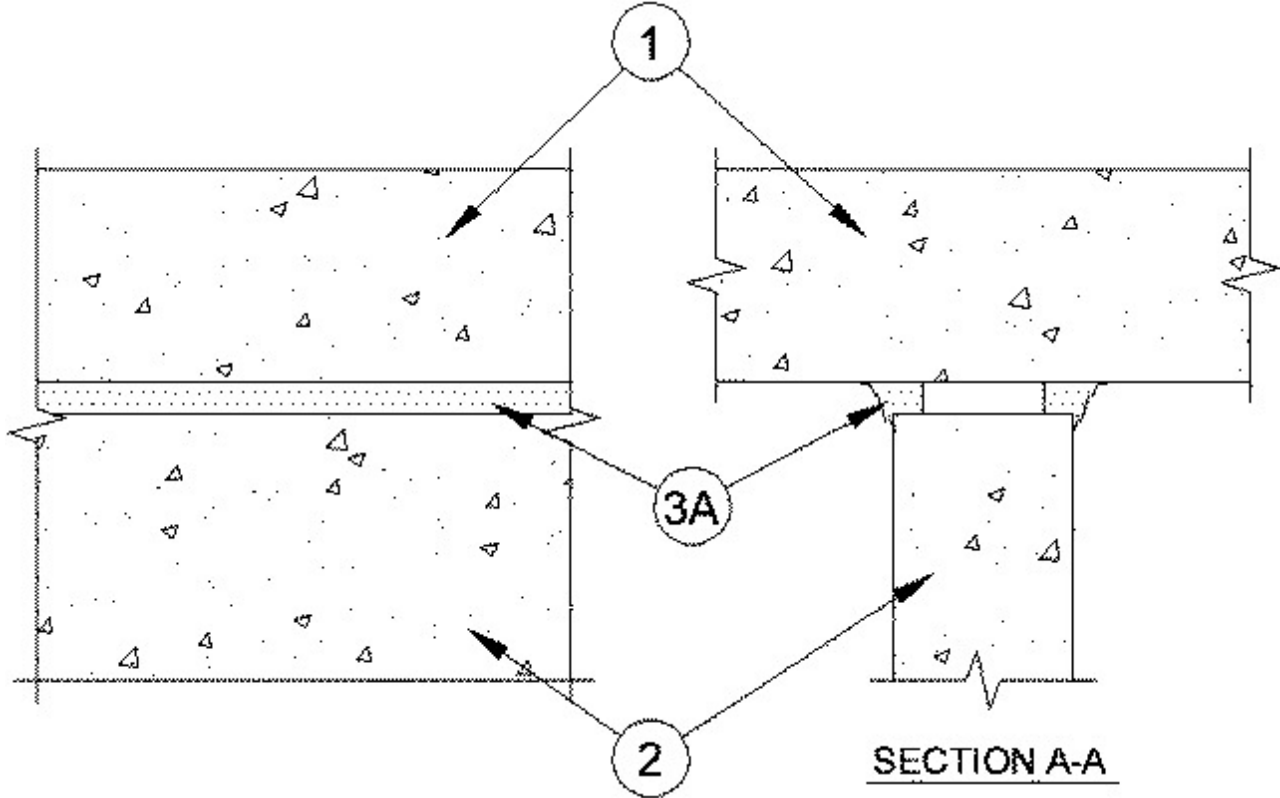
# System No. HW-D-0203

November 14, 2006

Assembly Rating — 2 Hr

Nominal Joint Width - 3/4 in.

Class II and III Movement Capabilities - 20% Compression and Extension



1. **Floor Assembly** — Min 4-1/2 in. thick reinforced lightweight or normal weight (100-150 pcf) structural concrete.

2. **Wall Assembly** — Min 6 in. thick reinforced lightweight or normal weight (100-150 pcf) structural concrete. Wall may also be constructed of any UL Classified **Concrete Blocks**\*.

See **Concrete Blocks** (CAZT) category in the Fire Resistance Directory for names of manufacturers.

3. **Joint System** — Max width of joint (at time of joint system installation) is 3/4 in. The joint system is designed to accommodate a max 20 percent compression or expansion from it's installed width. The joint system shall consist of the following:

A. **Fill, Void or Cavity Material\* - Caulk \*** — Min 5/8 in. thickness of fill material troweled on each side of the wall flush with wall and floor surfaces.

**RECTORSEAL** — BF 150+ Caulk, Biostop 750 Caulk

\*Bearing the UL Classification Mark