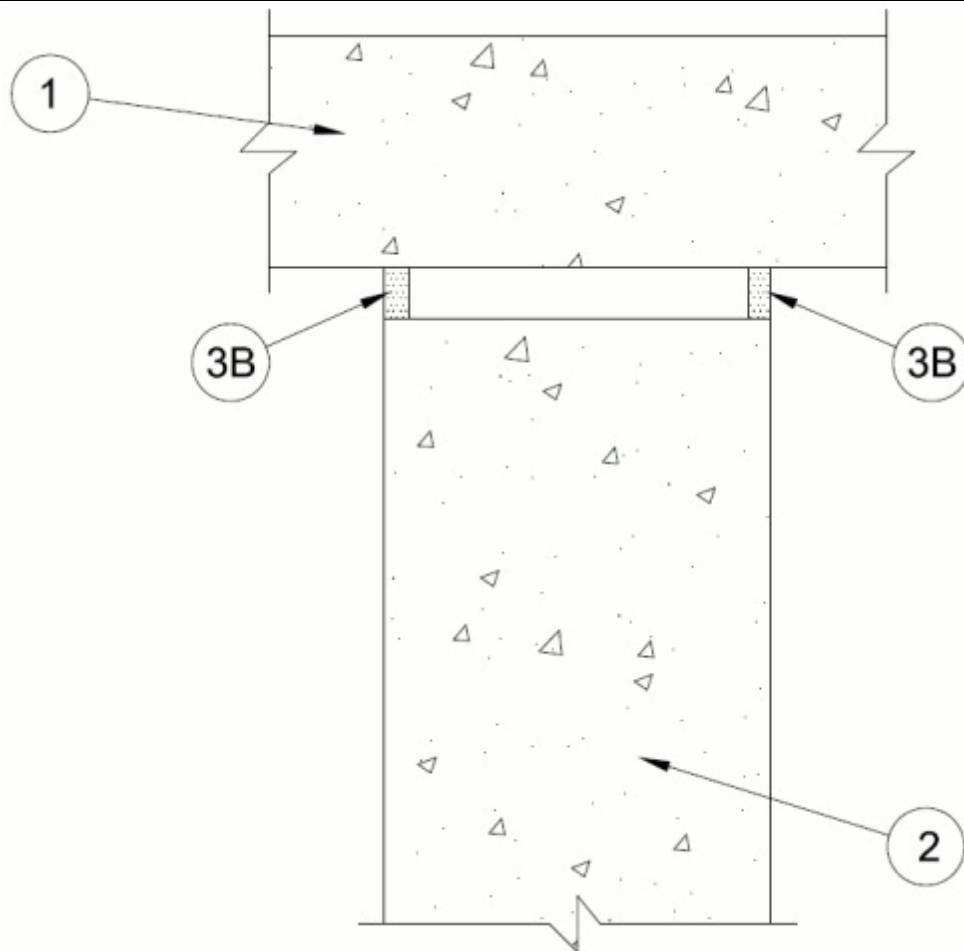


System No. HW-D-0189

June 07, 2017

ANSI/UL2079	CAN/ULC S115
Assembly Ratings — 2 and 3 Hr (See Item 2)	F Ratings — 2 and 3 Hr (See Item 2)
Nominal Joint Width - 1 In.	FT Ratings — 2 and 3 Hr (See Item 2)
Class II or III Movement Capabilities — 12.5% Compression or Extension	FH Ratings — 2 and 3 Hr (See Item 2)
	FTH Ratings — 2 and 3 Hr (See Item 2)
	Nominal Joint Width - 25 mm
	Class II or III Movement Capabilities — 12.5 % Compression or Extension



1. Floor Assembly — Min 4-1/2 in. (114 mm) thick reinforced lightweight or normal weight (100 - 150 pcf or 1600-2400 kg/m³) structural concrete. Floor may also be constructed of any min 6 in. (152 mm) thick UL Classified hollow-core **Precast Concrete Units***.

See **Precast Concrete Units** (CFTV) category in the Fire Resistance Directory for names of manufacturers.

2. Wall Assembly — Min 4-1/2 in. (114 mm) or min 8 in. (203 mm) thick reinforced lightweight or normal weight (100 - 150 pcf or 1600-2400 kg/m³) structural concrete. Wall may also be constructed of any UL Classified **Concrete Blocks***.

See **Concrete Blocks** (CAZT) category in the Fire Resistance Directory for names of manufacturers.

The hourly ratings are 2 hr for walls less than 8 in. (203 mm), 3 hr for walls 8 in. (203 mm) thick and thicker.

3. Joint System — Max separation between bottom of floor and top of wall (at time of installation of joint system) is 1 in. (25 mm) The joint system is designed to accommodate a max 12.5 percent compression or extension from its installed width. The joint system shall consist of the following:

A. **Packing Material** — (Optional, not shown) - Open or closed cell polyurethane foam backer rod used as a form to prevent the leakage of fill material. Packing material to be recessed from both surfaces of the wall as required to accommodate the required thickness of fill material.

B. **Fill, Void or Cavity Material* - Sealant** — Min 1/2 in. (13 mm) thickness of sealant applied within the joint, flush with both surfaces of wall.

RECTORSEAL — FlameSafe FS 900+, FS 1900, Metacaulk 1000, Metacaulk MC 150+, Metacaulk 350i, Metacaulk MC1200, Biostop 350i, Biostop BF 150+, Biostop 500+ or Biostop 750

* Indicates such products shall bear the UL or cUL Certification Mark for jurisdictions employing the UL or cUL Certification (such as Canada), respectively.