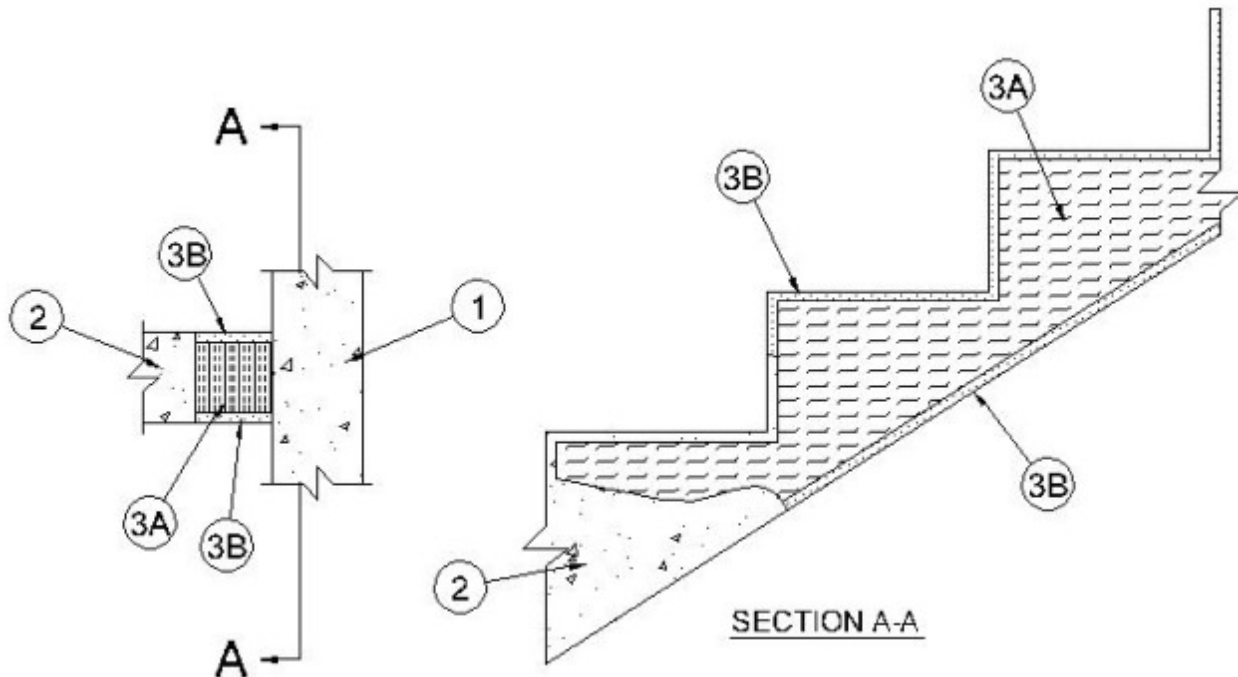


System No. FW-D-1065

December 07, 2017

ANSI/UL2079	CAN/ULC S115
Assembly Rating — 2 Hr	F Rating — 2 Hr
Nominal Joint Width - 4 In.	FT Rating — 2 Hr
Class II or III Movement Capabilities — 15.6% Compression or Extension	FH Rating — 2 Hr
L Rating At Ambient — Less Than 1 CFM/ft	FTH Rating — 2 Hr
L Rating At 400 F — Less Than 1 CFM/ft	Nominal Joint Width - 102 mm
	Class II or III Movement Capabilities — 15.6 % Compression or Extension
	L Rating At Ambient — Less Than 1.5 L/s/m
	L Rating At 204 C — Less Than 1.5 L/s/m



1. **Wall Assembly** — Min 4-1/2 in. (114 mm) thick reinforced lightweight or normal weight (100-150 pcf or 1600-2400 kg/m³) structural concrete. Wall may also be constructed of any UL Classified **Concrete Blocks***.

See **Concrete Blocks** (CAZT) category in the Fire Resistance Directory for names of manufacturers.

2. **Stair Assembly** — Min 4-1/2 in. (114 mm) thick reinforced lightweight or normal weight (100-150 pcf or 1600-2400 kg/m³) structural concrete.

3. **Joint System** — Max separation between edge of stair assembly and face of wall (at time of installation of joint system) is 4 in. (102 mm). The joint system is designed to accommodate a max 15.6 percent horizontal compression or extension from its installed width. The joint system shall consist of the following:

A. **Forming Material*** — Min 4 pcf (64 kg/m³) mineral wool batt insulation installed in joint opening as a permanent form. Pieces of batt cut to min width of 3-3/4 in. (95 mm) and installed edge-first into joint opening, parallel with joint direction, such that batt sections are compressed min 25 percent in thickness and that the compressed batt sections are recessed from top and

bottom surface of the stair assembly as required to accommodate the required thickness of fill material. Adjoining lengths of batt to be tightly-butteted with butted seams spaced min 24 in. (610 mm) apart along the length of the joint.

INDUSTRIAL INSULATION GROUP L L C — MinWool-1200 Safing

ROCK WOOL MANUFACTURING CO — Safing Board

ROCKWOOL — SAFE Mineral Wool

THERMAFIBER INC — Type SAF

B. Fill, Void or Cavity Material* - Sealant — Min 1/4 in. (6 mm) thickness of fill material applied within the joint, flush with top and bottom surfaces of stair assembly.

RECTORSEAL — FlameSafe FS 4000 Sealant, Caulk Grade or Metacaulk 835+

* Indicates such products shall bear the UL or cUL Certification Mark for jurisdictions employing the UL or cUL Certification (such as Canada), respectively.