



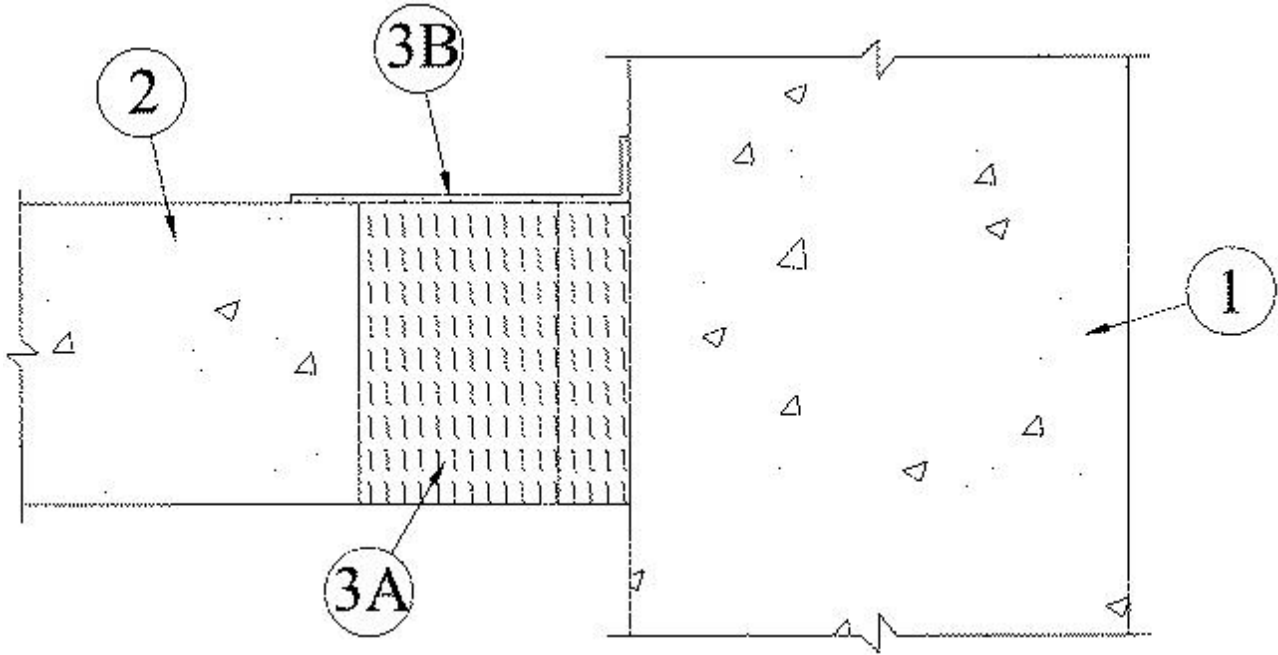
System No. FW-D-1023

April 05, 2006

Assembly Rating — 2 Hr

Nominal Joint Width — 4 In.

Class II and III Movement Capabilities — 20% Compression or Extension



1. **Wall Assembly** — Min 7-3/8 in. (187 mm) thick reinforced lightweight or normal weight (100-150 pcf or 1600-2400 kg/m³) structural concrete. Wall may also be constructed of any UL Classified **Concrete Blocks*** .

See **Concrete Blocks** (CAZT) category in the Fire Resistance Directory for names of manufacturers.

2. **Floor Assembly** — Min 4-1/2 in. (114 mm) thick reinforced lightweight or normal weight (100-150 pcf or 1600-2400 kg/m³) structural concrete.

3. **Joint System** — **Joint System Max separation between edge of floor and face of wall at time of installation of joint system is 4 in. (102 mm). The joint system is designed to accommodate a max 20 percent compression or extension from its installed width.** The joint system shall consist of the following:

A. **Forming Material*** — Min 4 pcf (64 kg/m³) density mineral wool batt insulation installed in joint opening as a permanent form. Pieces of batt cut to a min width of 4-1/2 in. (114 mm) and installed edge-first into joint opening, parallel with joint direction, such that batts sections are compressed min 33 percent in thickness and such that the compressed batt sections are flush with the top surface of floor. Alternately, min 4 pcf (64 kg/m³) density mineral wool batt cut to a min width of 3-1/2 in. (89 mm) and installed edge-first into joint opening, parallel with joint direction, such that batts sections are compressed min 33 percent in thickness and such that the compressed batt sections are recessed 1 in. (25 mm) from the top surface of floor. Additional 1 in. (25 mm) thick pieces of batt are placed horizontally over the installed lower layer. The 1 in. (25 mm) thick batts are cut approx 50 percent wider than the joint opening width, compressed and installed within the opening, flush with top surface of floor. Adjoining lengths of batt to be tightly-butted with butted seams spaced min 24 in. (610 mm) apart along the length of the joint.

ROCK WOOL MANUFACTURING CO — Delta Board

B. Fill, Void or Cavity Material* — Min 1/8 in. (3 mm) wet thickness (min 1/16 in. or 1.6 mm dry thickness) of fill material sprayed or trowelled on top of joint system to completely cover mineral wool forming material and to overlap a min of 1 in. (25 mm) onto wall and top surface of floor.

RECTORSEAL — Biostop 750 Spray, Biostop 750 Caulk Grade or Biostop 750 SL

*Bearing the UL Classification Mark