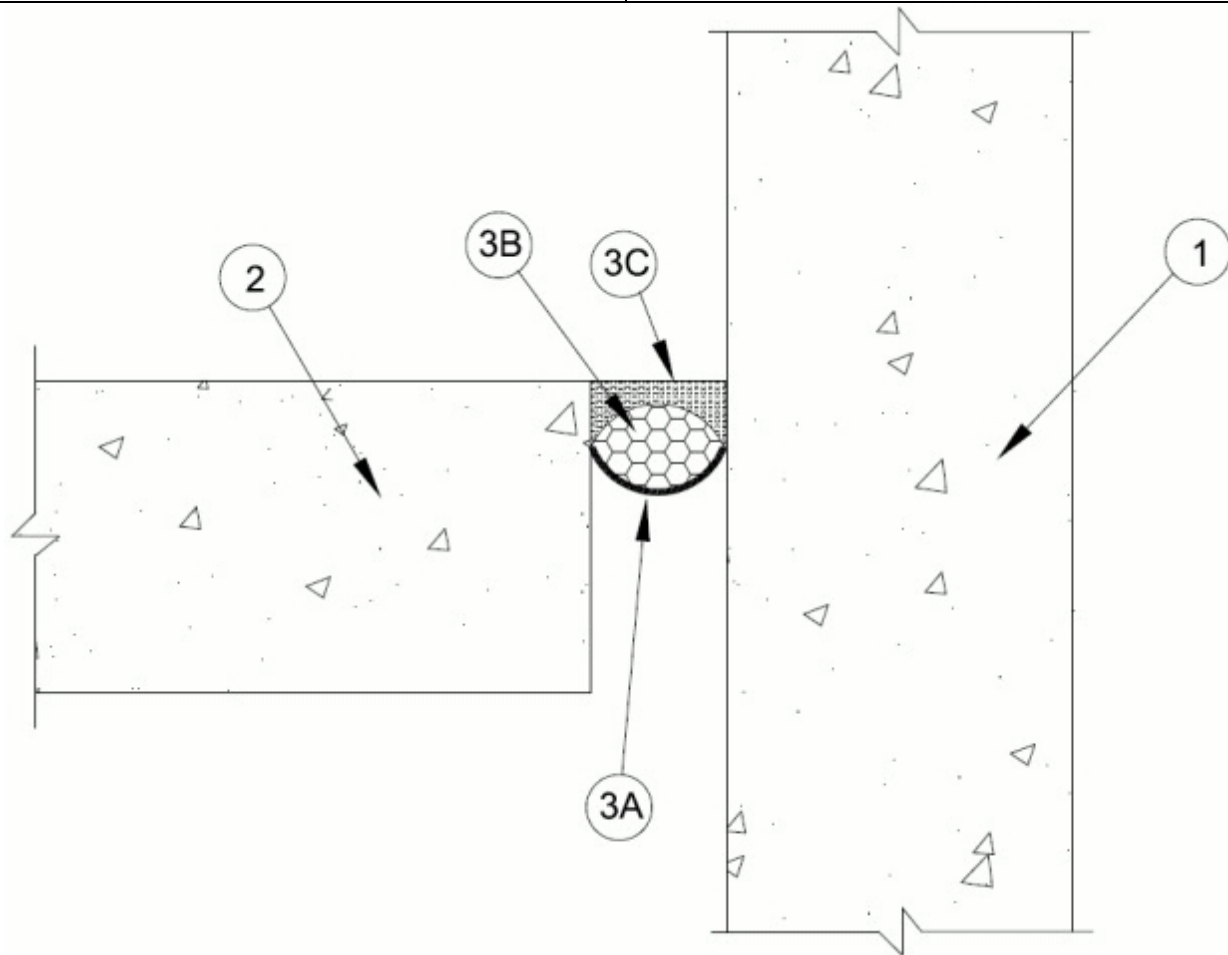


### System No. FW-D-0070

May 13, 2015

ANSI/UL2079	CAN/ULC S115
Assembly Ratings — 2 and 3 Hr (See Item 3)	F Ratings — 2 and 3 Hr (See Item 3)
Nominal Joint Width — 1 and 2 In. (See Item 3)	FT Ratings — 2 and 3 Hr (See Item 3)
Class II or III Movement Capabilities — 25 % Compression or Extension	FH Ratings — 0 and 2 Hr (See Item 3)
	FTH Ratings — 0 and 2 Hr (See Item 3)
	Nominal Joint Width — 1 and 2 In. (See Item 3)
	Class II or III Movement Capabilities — 25 % Compression or Extension



1. **Wall Assembly** — Min 6 in. (152 mm) thick reinforced lightweight or normal weight (100-150 pcf or 1600-2400 kg/m<sup>3</sup>) structural concrete. Wall may also be constructed of any UL Classified **Concrete Blocks**\*.

See **Concrete Blocks** (CAZT) category in the Fire Resistance Directory for names of manufacturers.

2. **Floor Assembly** — Min 6 in. (152 mm) thick reinforced lightweight or normal weight (100-150 pcf or 1600-2400 kg/m<sup>3</sup>) structural concrete.

3. **Joint System** — For 3 Hr Assembly, F and FT Rating, max width of joint (at time of installation of joint system) is 1 in. (25 mm). For 2 Hr Assembly, F and FT Rating, max width of joint (at time of installation of joint system) is 2 in. (51 mm). For 3 Hr fire rated joints, the FH and FTH Rating is 0 Hr. For 2 Hr fire rated joints, FH and FTH Rating is 2

**hr. The joint system is designed to accommodate a max 25 percent compression or extension from its installed width.** The joint system shall consist of the following:

**A. Fill, Void or Cavity Material\* — Joint Strip** — Nom 1/16 in. (1.5 mm) thick strip of intumescent material faced on one side with an elastomeric backing strip. For nom joint widths not exceeding 1 in. (25 mm), a 2 in. (51 mm) wide strip shall be used. For nom joint widths exceeding 1 in. (25 mm), a 4 in. (102 mm) wide strip shall be used. Strip is formed into a "u-shape" along its length and friction fit into joint opening such that the base of the "u" is recessed approximately 1-9/16 in. (39 mm) from the top surface of floor.

**RECTORSEAL** — Metacaulk Joint Strip, Biostop Joint Strip or FlameSafe Joint Strip

**B. Packing Material** — Foam backer rod firmly packed into opening as a permanent form. Packing material to be recessed from top surface of floor to accommodate the required thickness of fill material.

**C. Fill, Void or Cavity Material\*** — Caulk - Min 1/4 in. (6 mm) thickness of fill material applied within the joint, flush with top surface of floor.

**BASF CONSTRUCTION CHEMICAL L L C** — Sonolastic NP-1 Caulk

**RECTORSEAL** — Metacaulk 1000, 150+, 350i, 835+, 1200, Biostop 500+, 150+, 350i, 100, 750, FlameSafe 900+, 1900, 4000

**SIKA CORPORATION** — Sikaflex 2C NS

\* Indicates such products shall bear the UL or cUL Certification Mark for jurisdictions employing the UL or cUL Certification (such as Canada), respectively.