



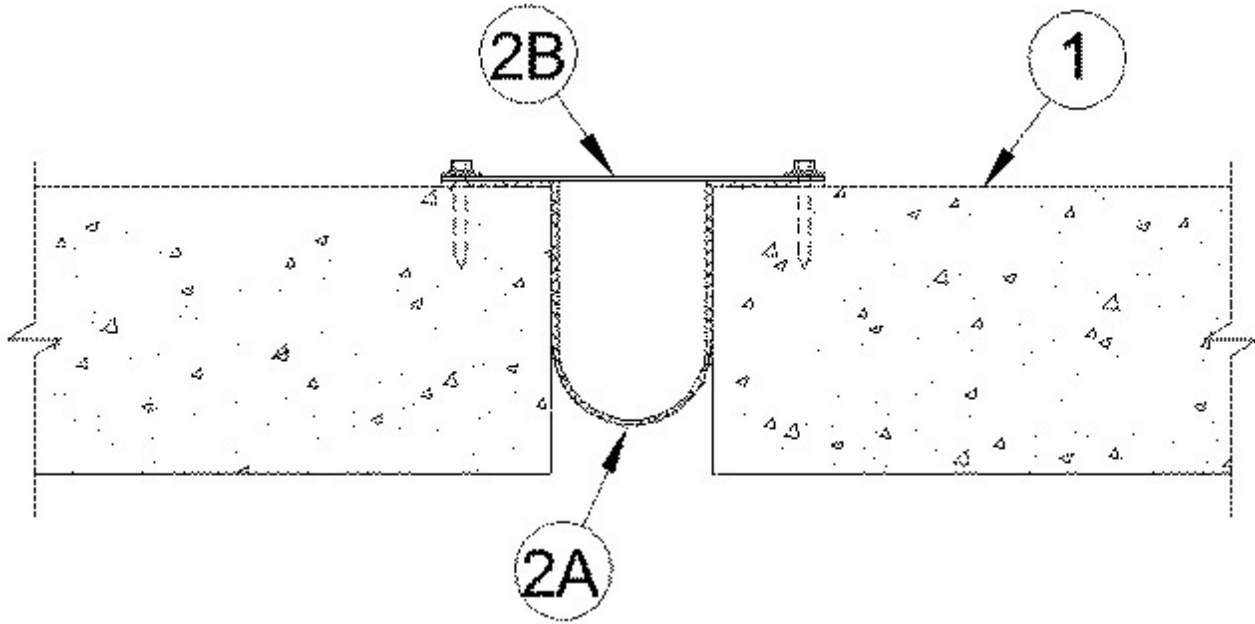
System No. FF-D-1054

August 15, 2005

Assembly Rating - 2 Hr

Nominal Joint Width - 2-1/4 in.

Class II and III Movement Capabilities - 20% Compression or Extension



1. **Floor Assembly** — Min 4-1/2 in. (114 mm) thick reinforced lightweight or normal weight (100-150 pcf or 1600-2400 kg/m³) structural concrete.

2. **Joint System** — Max width of joint (at time of installation of joint system) is 2-1/4 in. (57 mm). The joint system is designed to accommodate a max 20 percent compression or extension from its installed width. The joint system consists of the following:

A. **Fill, Void or Cavity Material* - Joint Strip** — One layer of 12 in. (305 mm) wide by 3/32 in. (2.5 mm) thick flexible intumescent material installed to drape into joint opening and anchored beneath joint cover (Item 2B). Side edges of joint strip to align with side edges of joint cover on both sides of joint opening. Flexible intumescent material installed continuous over entire length of joint opening without seams or splices.

RECTORSEAL — Biostop Joint Strip

B. **Joint Cover** — Nom 6 in. (152 mm) wide by min 0.051 in. (1.3 mm) thick steel cover plate centered over entire length of joint opening. One side of cover plate to include 1/4 in. (6 mm) diam holes spaced 6 in. (152 mm) OC. Opposite side of cover plate to include 1/4 in. (6 mm) wide by 1-1/2 in. (38 mm) long slots, transverse to joint direction, spaced 6 in. (152 mm) OC. Cover plate attached to top surface of floor on each side of joint opening, through joint strip material, with 1/4 in. (6 mm) diam by 1-1/4 in. (32 mm) long steel concrete anchors in conjunction with 3/4 in. (19 mm) diam steel washers spaced 6 in. (152 mm).

*Bearing the UL Classification Mark