



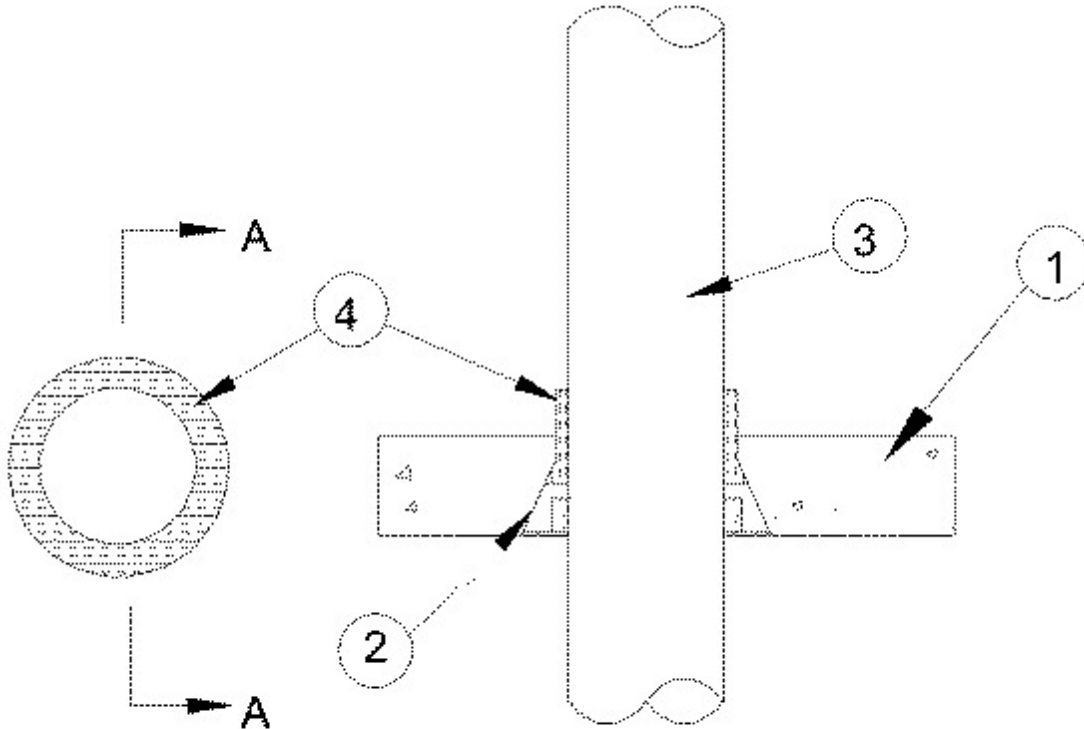
# System No. F-A-1081

November 28, 2007

F Rating - 2 Hr

T Ratings - 1/4 and 1/2 Hr (See Item 3)

W Rating - Class 1 (See Item 5)



## Section A-A

1. **Floor Assembly** — Min 2-1/2 in. (64 mm) thick reinforced lightweight or normal weight (100-150 pcf or 1600-2400 kg/m<sup>3</sup>) concrete.

2. **Firestop Devices\*** — Cast in place firestop device permanently embedded during concrete placement in accordance with accompanying installation instructions. The device shall extend min 2 in (51 mm) up to a max of 5-1/2 in. (140 mm) above top surface of floor. The devices are provided in two sizes, nom 2-1/2 in. (64 mm) and nom 4 in. (102 mm) sizes.

**RECTORSEAL** — Biostop Cast -in- Place Firestop Device

3. **Through Penetrants** — One metallic pipe, tubing or conduit installed within the firestop system. Penetrant to be rigidly supported on both sides of floor assembly. The penetrant size shall be max 2-1/2 in. (64 mm) for the nom 2-1/2 in. (64 mm) device. The penetrant size shall be max 4 in. (102 mm) for the nom 4 in. (102 mm) device. A min 1/2 in. (13 mm) annular space shall be maintained between the penetrant and the device. The following types of metallic penetrants may be used:

A. **Steel Pipe** — Schedule 5 (or heavier) steel pipe.

B. **Iron Pipe** — Cast or ductile iron pipe.

C. **Conduit** — Steel conduit or steel electrical metallic tubing.

D. **Copper Tubing** — Type L (or heavier) copper tubing.

E. **Copper Pipe** — Regular (or heavier) copper pipe.

**The T Rating is 1/2 Hr for penetrants A, B or C. The T Rating is 1/4 Hr for Penetrants D and E.**

4. **Packing Material — For Penetrants smaller than nominal device size** — Min 3-1/2 in. (89 mm) thickness of min 4 pcf (64 kg/m<sup>3</sup>) mineral wool batt insulation firmly packed into the annular space between the penetrant and device as a permanent form. The packing material is to be recessed 1-1/2 in. (38 mm) below the top surface of the floor and extend upward 2 in. (51 mm) above the top surface of the floor. When optional caulk (Item 5) is used, packing material to be recessed from top of device to accommodate the required thickness of caulk.

5. **Fill, Void or Cavity Material\* — Caulk** — (Optional, Not Shown) - Min 1/4 in. (6 mm) thickness for 2-1/2 in. (64 mm) and 4 in. (102 mm) CIP device and min 3/8 in. (10 mm) thickness for 6 in. (152 mm) CIP device. Caulk applied within device, flush with top surface of device.

**RECTORSEAL** — Biotherm 100, Biotherm 200SL or Biostop 750 with 2-1/2 in. (64 mm) CIP device only.

**W Rating only applies when the optional caulk is used.**

\*Bearing the UL Classification Mark