



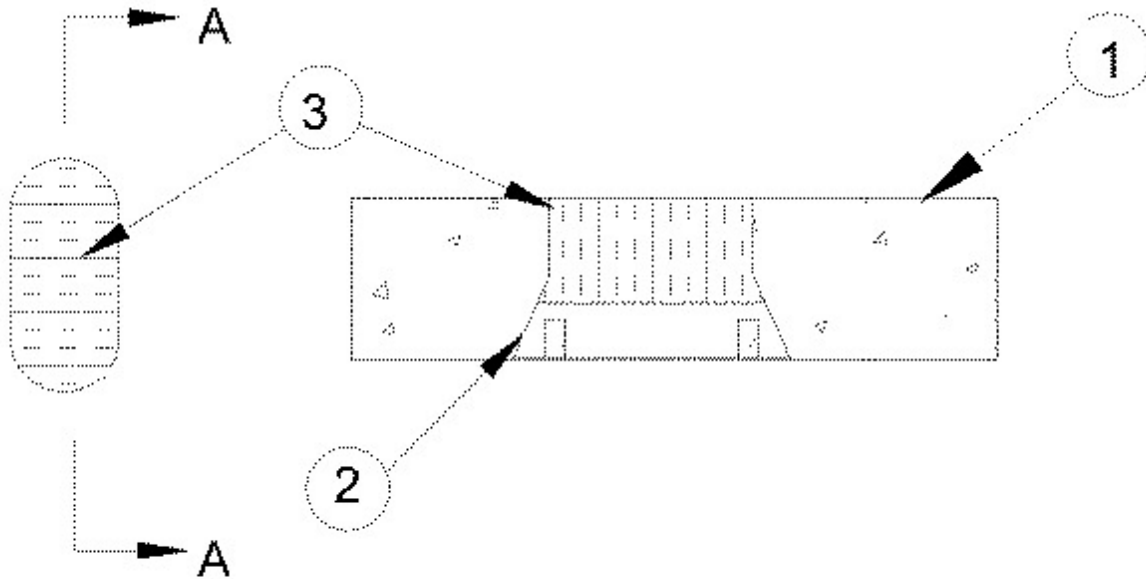
System No. F-A-0020

November 28, 2007

F Rating - 3 Hr

T Rating - 3 Hr

W Rating - Class 1 (See Item 4)



Section A-A

1. **Floor Assembly** — Min 4-1/2 in. (114 mm) thick reinforced lightweight or normal weight (100-150 pcf or 1600-2400 kg/m³) concrete.

2. **Firestop Devices*** — Cast in place firestop device permanently embedded during concrete placement in accordance with accompanying installation instructions. The device may project up to a max of 3-1/2 in. (89 mm) above top surface of floor or may be trimmed flush with top surface of floor.

RECTORSEAL — Biostop Multi Purpose CIP Device

3. **Packing Material** — Min 3 in. (76 mm) thickness of min 4 pcf (64 kg/m³) mineral wool batt insulation firmly packed into the top of the firestop device (Item 2) as a permanent form, flush with the top surface of the floor or recessed from the top surface of the device to accommodate the required thickness of caulk (Item 4).

4. **Fill, Void or Cavity Material*** — **Caulk** — (Optional, Not Shown) - Min 1/4 in. (6 mm) thickness caulk applied within device, flush with top surface of device.

RECTORSEAL — Biotherm 100, Biotherm 200SL

W Rating only applies when the optional caulk is used.

*Bearing the UL Classification Mark