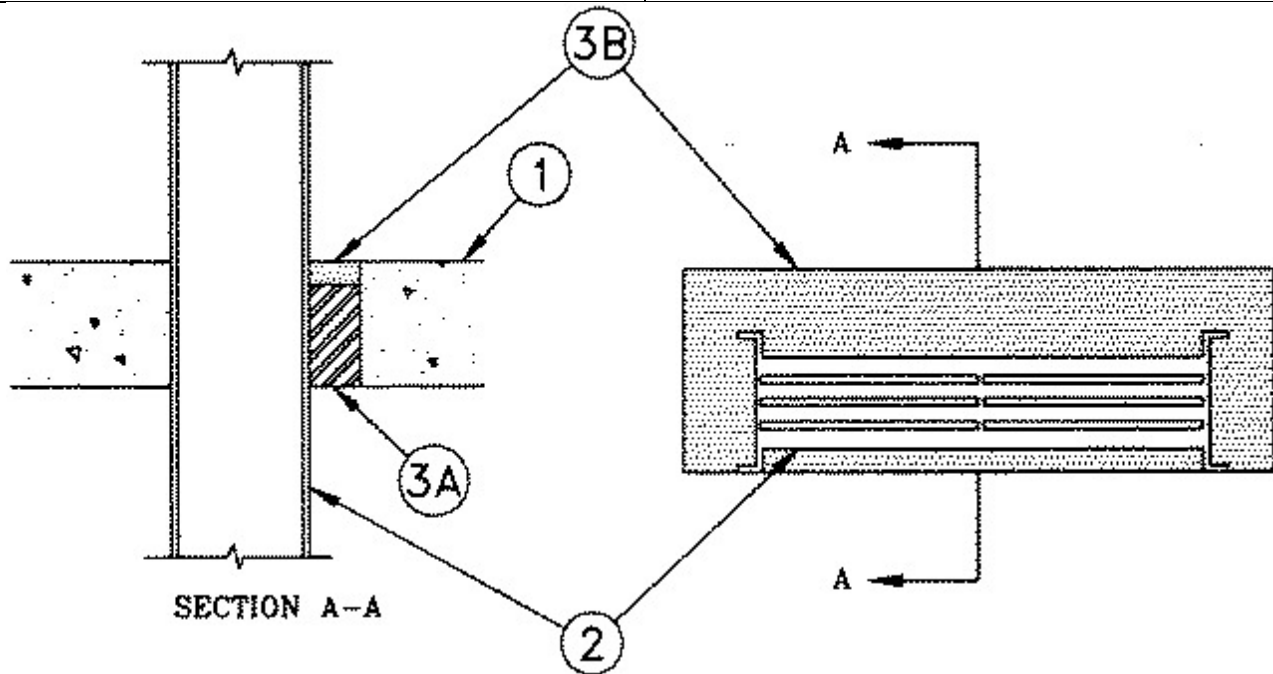




System No. C-AJ-6027

July 16, 2014

ANSI/UL1479 (ASTM E814)	CAN/ULC S115
F Ratings - 3 Hr	F Ratings - 3 Hr
T Ratings - 0 Hr	FT Ratings - 0 Hr
	FH Ratings - 3 Hr
	FTH Ratings - 0 Hr
L Rating At Ambient - Less Than 1 CFM/sq ft	L Rating At Ambient - Less Than 1 CFM/sq ft
L Rating At 400 F - Less Than 1 CFM/sq ft	L Rating At 400 F - Less Than 1 CFM/sq ft



1. **Floor or Wall Assembly** — Min 4-1/2 in. (114 mm) thick reinforced lightweight or normal weight (100-150 pcf or 1600-2400 kg/m³) concrete floor or min 5 in. (127 mm) thick reinforced lightweight or normal concrete wall. Wall may also be constructed of any UL Classified **Concrete Blocks***. Max area of opening is 345 sq in. (2226 cm²) with max dimension of 28-1/2 in. (724 mm).

See **Concrete Blocks** (CAZT) category in the Fire Resistance Directory for names of manufacturers.

2. **Busway+** — Nom 19 in. (483 mm) wide (or smaller) by 6 in. (102 mm) deep "I" shaped aluminum and steel enclosure containing factory mounted aluminum bars rated for 600 V, 4000A.

One busway to be installed within the opening. The annular space between the flange tip of the busway and the periphery of the opening shall be min 0 in. (point contact) to max 5-1/8 in. (130 mm). The annular space between the web section of the busway and the periphery of the opening shall be a nom 8 in. (203 mm). Busway to be rigidly supported on both sides of floor or wall assembly. The busway shall bear the UL Listing Mark and shall be installed in accordance with all provisions of the National Electrical Code, NFPA 70.

3. **Firestop System** — The firestop system shall consist of the following:

A. **Packing Material** — Min 4 in. (102 mm) thickness of min 4 pcf (64 kg/m³) mineral wool batt insulation firmly packed into opening as a permanent form. Packing material to be recessed from top surface of floor or from both surfaces of wall to accommodate the thickness of fill material.

B. Fill, Void, or Cavity Materials* - Caulk — Min 1/2 in. (13 mm) thickness of fill material applied within the annulus, flush with top surface of floor and both surfaces of wall.

RECTORSEAL — FlameSafe® FS900+, Metacaulk MC 150+, Biostop BF 150+

* Indicates such products shall bear the UL or cUL Certification Mark for jurisdictions employing the UL or cUL Certification (such as Canada), respectively.

+ Bearing the UL Listing Mark.