

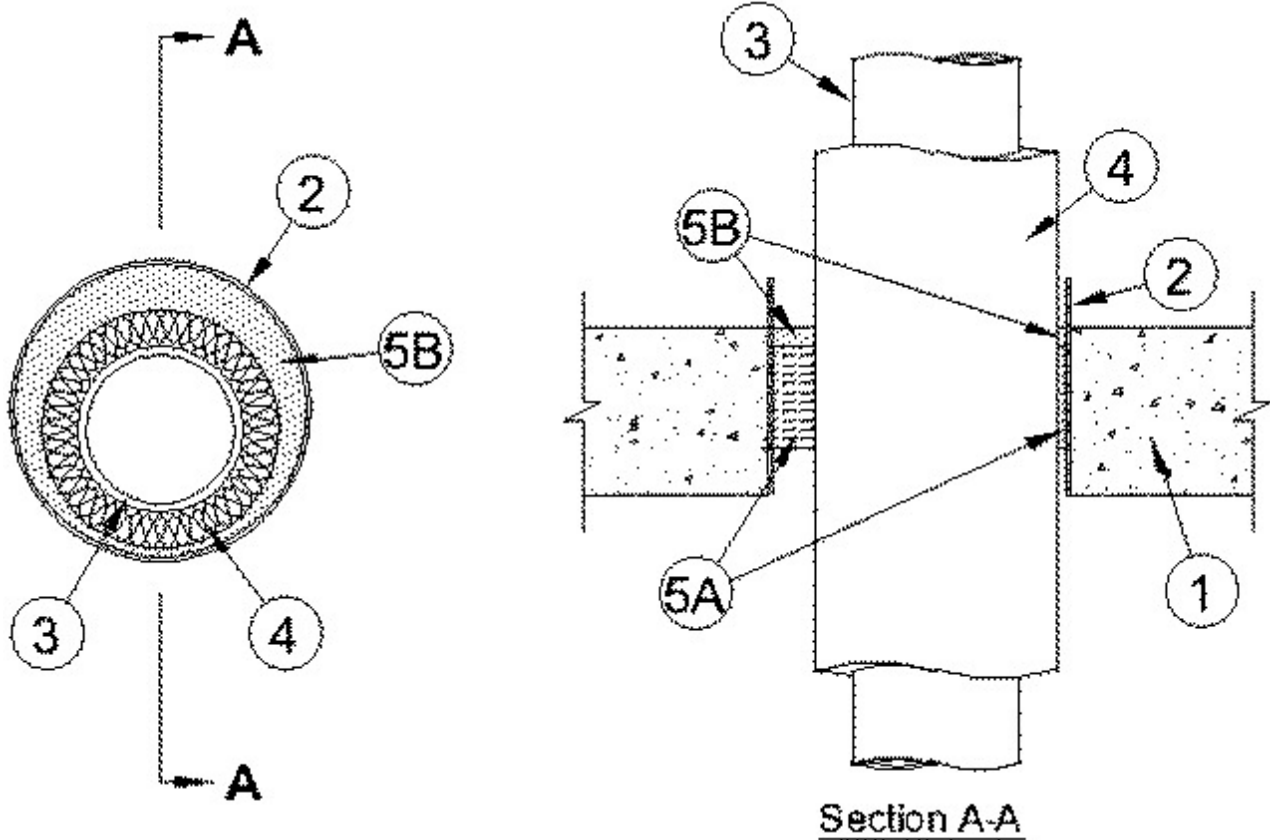


System No. C-AJ-5285

June 23, 2005

F Rating — 2 Hr

T Rating — 3/4 Hr



1. Floor or Wall Assembly — Min 4-1/2 in. (114 mm) thick reinforced lightweight or normal weight (100 - 150 pcf or 1600-2400 kg/cu meter) concrete. Wall may also be constructed of any UL **Classified Concrete Blocks***. Max diam of opening is 12 in. (305 mm).

See **Concrete Blocks** (CAZT) category in the Fire Resistance Directory for names of manufacturers.

2. Steel Sleeve — (Optional) - Nom 12 in. (305 mm) cylindrical sleeve fabricated from 0.127 in. (3 mm) thick (No. 10 gauge) sheet steel cast or grouted into floor or wall assembly. Length of steel sleeve to be 1-1/2 in. (38 mm) or 3 in. (76 mm) more than the overall thickness of the floor or wall, respectively, such that the end of the sleeve projects 1-1/2 in. from top surface of the floor or each surface of wall.

3. Through Penetrants — One metallic pipe or tubing to be installed within the firestop system. Pipe or tubing to be rigidly supported on both sides of floor or wall assembly. The following types and sizes of pipes, conduits or tubing may be used:

- A. **Steel Pipe** — Nom 6 in. (152 mm) diam (or smaller) Schedule 10 (or heavier) steel pipe.
- B. **Iron Pipe** — Nom 6 in. (152 mm) diam (or smaller) cast or ductile iron pipe.
- C. **Copper Tubing** — Nom 6 in. (152 mm) Type L (or heavier) copper tubing.
- D. **Copper Pipe** — Nom 6 in. (152 mm) Regular (or heavier) copper pipe.

4. Pipe Covering* — Nom 2 in. thick hollow cylindrical heavy density (min 3.5 pcf) glass fiber units jacketed on the outside with an all service jacket. Longitudinal joints sealed with metal fasteners or factory-applied self-sealing lap tape.

Transverse joints secured with metal fasteners or with butt tape supplied with the product. The annular space shall be min 1/4 in. to max 1-1/2 in. (7 to 38 mm) is required within the firestop system.

See **Pipe and Equipment Covering - Materials** (BRGU) category in the Building Materials Directory for names of manufacturers. Any pipe covering material meeting the above specifications and bearing the UL Classification Marking with a Flame Spread Index of 25 or less and a Smoke Developed Index of 50 or less may be used.

5. Firestop System — The firestop system shall consist of the following:

A. **Packing Material** — Min 3 in. (76 mm) thickness of min 4 pcf (64 kg/m³) mineral wool batt insulation firmly packed into opening as a permanent form. Packing material to be recessed from top surface of floor or from both surfaces of wall as required to accommodate the required thickness of fill material.

B. **Fill, Void or Cavity Material*** — **Caulk** — Min 3/4 in. (19 mm) thickness of fill material applied within the annulus, flush with top surface of floor or with both surfaces of wall assembly.

RECTORSEAL — Biostop 500+

*Bearing the UL Classification Mark