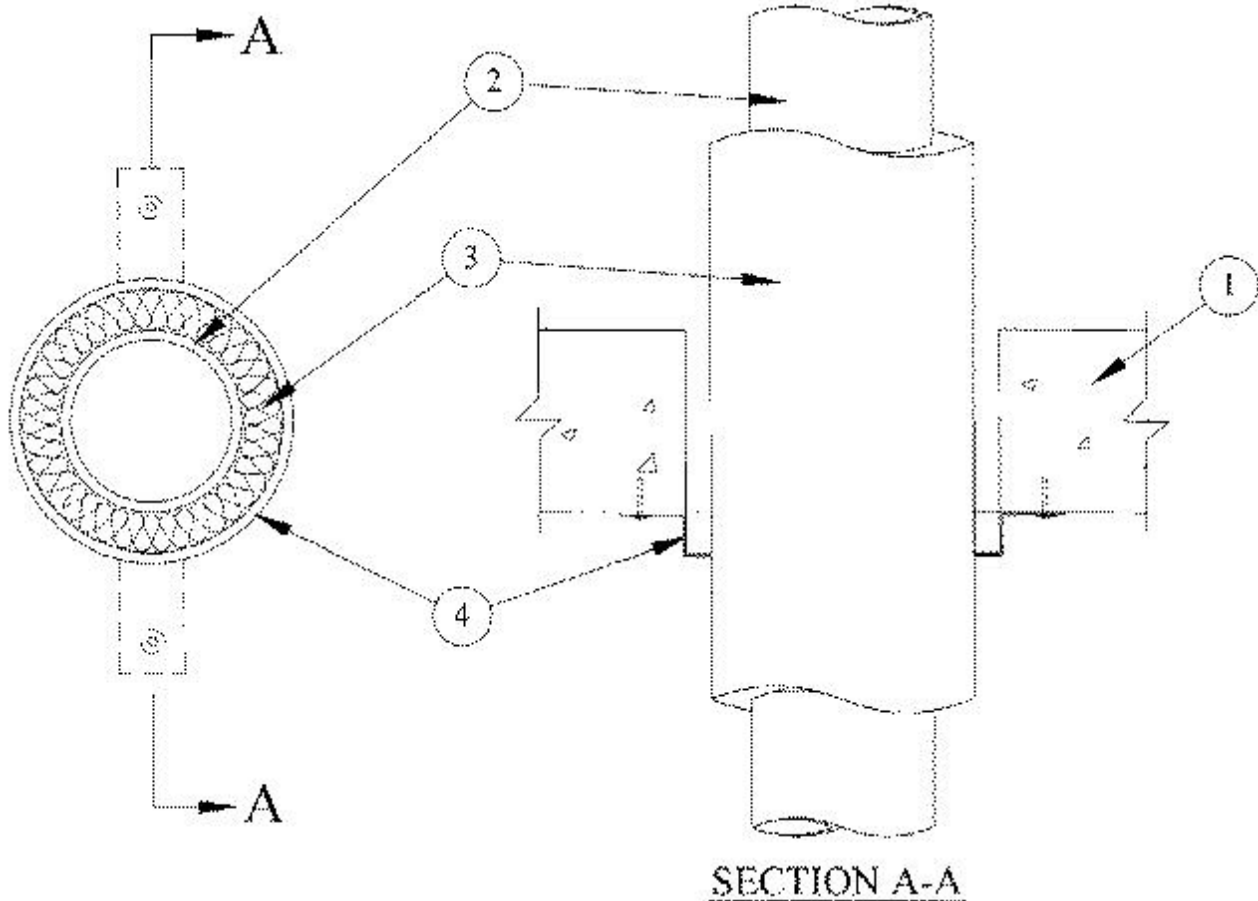


System No. C-AJ-5158

December 07, 2000

F Rating — 2 Hr

T Rating — 2 Hr



1. **Floor or Wall Assembly** — Min 4-1/2 in. thick reinforced lightweight or normal weight (100-150 pcf) concrete. Wall may also be constructed of any UL Classified **Concrete Blocks***. Max diam of opening is 4 in.

See **Concrete Blocks** (CAZT) category in the Fire Resistance Directory for names of manufacturers.

2. **Through Penetrants** — One nonmetallic pipe to be installed either eccentrically or concentrically within the firestop system. Pipe to be rigidly supported on both sides of floor or wall assembly. The following type and size of nonmetallic pipe may be used:

Polyvinyl Chloride (PVC) Pipe Nom 2 in. diam Schedule 40 solid core PVC pipe for use in closed (process or supply) or vented (drain, waste or vent) piping systems.

3. **Pipe Covering*** — Nom 1/2 in. thick hollow cylindrical heavy density (min 3.5 pcf) glass fiber units jacketed on the outside with an all service jacket. Longitudinal joints sealed with metal fasteners or factory-applied self-sealing lap tape. Transverse joints secured with metal fasteners or with butt tape supplied with the product. The nom annular space of 5/16 in. is required within the firestop system.

See **Pipe and Equipment Covering Materials (BRUG)** category in the Building Materials Directory for names of manufacturers. Any pipe covering material meeting the above specifications and bearing the UL Classification Marking with a Flame Spread Index of 25 or less and a Smoke Developed Index of 50 or less may be used.

4. **Firestop Device*** — Galv steel collar lined with an intumescent material sized to fit specific diam of the through penetrant. Device to be installed around through penetrant in accordance with accompanying installation instructions. Device incorporates anchor tabs for securement to underside of the concrete floor by means of 1/4 in. diam by 1-1/4 in. long steel expansion bolts or Tapcon® concrete anchors. Device secured at each tab. In walls, collars are installed on each side of wall.

RECTORSEAL — Biostop Pipe Collar

*Bearing the UL Classification Mark