



### System No. C-AJ-3309

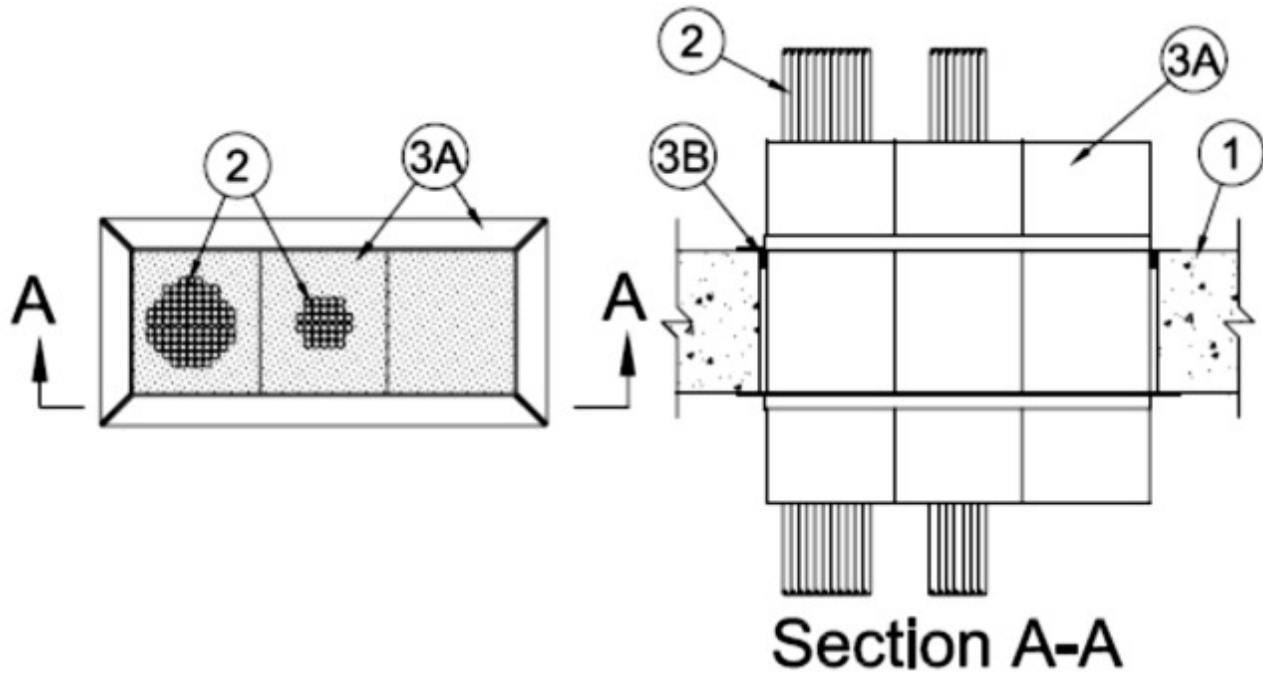
June 29, 2009

F Rating — 3 Hr

T Rating — 1 Hr

L Rating At Ambient — 1.5 or 3 CFM (See Item 2)

L Rating At 400 F — Less than 1 or 2 CFM (See Item 2)



1. **Floor or Wall Assembly** — Min 4-1/2 in. (114 mm) thick reinforced lightweight or normal weight (100-150 pcf or 1600-2400 kg/m<sup>3</sup>) concrete. Wall may also be constructed of any UL Classified **Concrete Blocks\***. Max area of opening is 20-1/8 in.<sup>2</sup> (130 cm<sup>2</sup>) with a max dimension of is 7-5/8 in. (194 mm).

See **Concrete Blocks** (CAZT) category in Fire Resistance Directory for names of manufacturers.

2. **Cables** — One or more cables may be installed concentrically or eccentrically within each firestop device (Item 3A). Cables installed in a bundle having max bundle diam of 2 in. (51 mm). Cable bundle to be rigidly supported on both sides of floor or wall assembly. Any combination of the following types and sizes of cables may be used:

- A. Max 4 pair No. 24 AWG copper conductor Cat5e or Cat 6 telephone cable with polyvinyl chloride (PVC) insulation and jacket materials.
- B. Max 4 pair No. 23 AWG copper conductor Cat 6 telephone cable with PVC insulation and jacket materials.

**L Rating is 3 CFM at ambient and 2 CFM at elevated temperature when more than one cable bundle is used.**

3. **Firestop System** — The firestop system shall consist of the following:

A. **Firestop Device\*** — A max of three square firestop devices may be ganged together. Each device consists of a nom 2-1/2 by 2-1/2 by 10 in. (64 by 64 by 254 mm) powder coated steel transit incorporating internal intumescent material, foam plugs and mounting flanges. Firestop device to be centered within opening and installed with ends projecting an equal distance beyond each surface of the floor or wall assembly in accordance with the accompanying

installation instructions. The annular space between the firestop device(s) and the periphery of the opening shall be nom 1/4 in. (6 mm). Firestop devices secured in place by means of fill material (Item 4B) and steel split mounting flanges sized to accommodate the firestop device. Steel split mounting flanges installed on both sides of floor or wall after installation of fill material and secured to together with supplied steel set screws. Nom 1 in. (25 mm) thick pre-cut foam plugs sized to accommodate the cable bundle and installed flush with each end of device on both sides of floor or wall assembly.

**RECTORSEAL** — Biostop ® 2" square Pass Through Device, Biostop ® 4" square Pass Through Device

**B. Fill, Void or Cavity Materials\* - Caulk or Putty** — Min 1/8 in. (25 mm) thickness of caulk or min 1-1/2 in. thickness of putty applied within the annulus, flush with top surface of floor or with both surfaces of wall prior to the installation of the mounting flanges.

**RECTORSEAL** — Biostop 500+ or Firerated putty.

\*Bearing the UL Classification Mark