

System No. C-AJ-3125

July 27, 2006

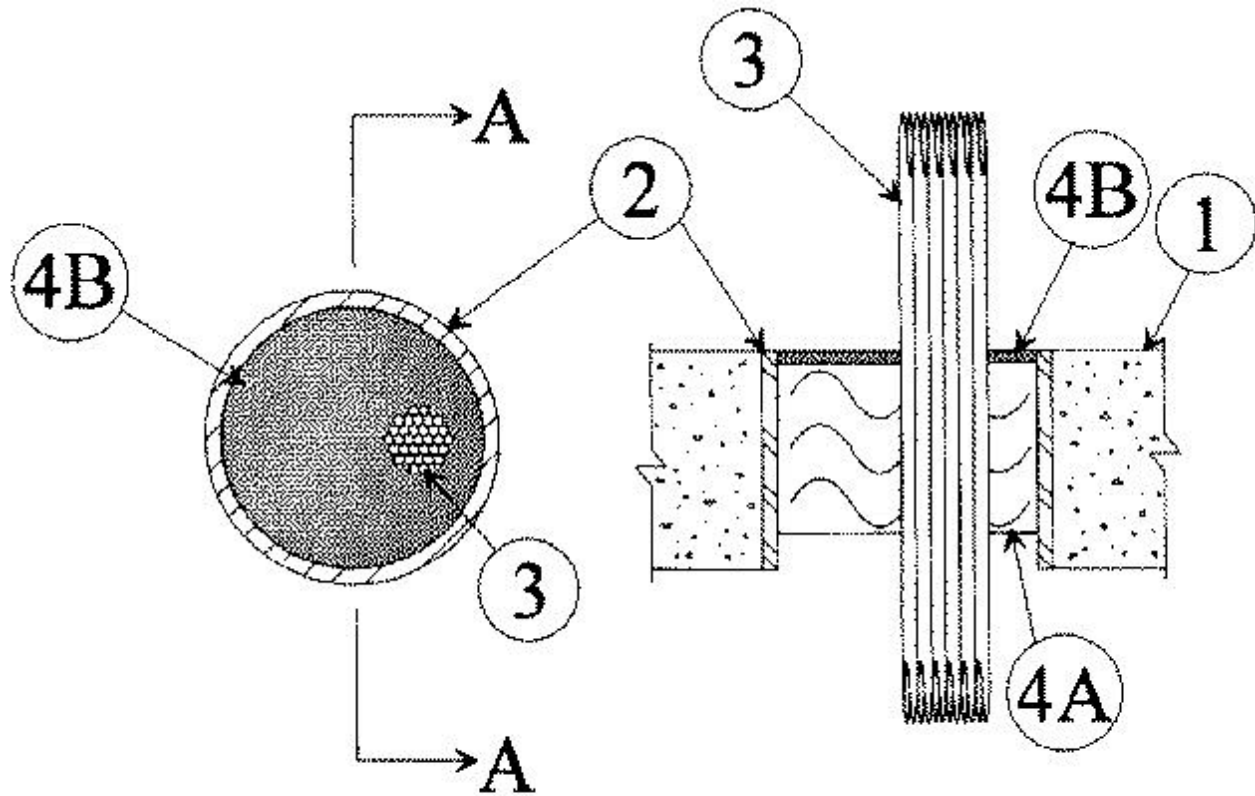
F Rating — 3 Hr

T Ratings — 0 & 1/2 Hr (See Item 3)

L Rating at Ambient — Less Than 1 CFM/sq ft (See Item 3)

L Rating at 400 F — 3 CFM/sq ft (See Item 3)

W Rating — Class 1 (See Item 3)



SECTION A-A

1. **Floor or Wall Assembly** — Min 4-1/2 in. thick reinforced lightweight or normal weight (100-150 pcf) concrete. Wall may also be constructed of any UL Classified **Concrete Blocks***. Max diam of opening is 6 in.

See **Concrete Blocks** (CAZT) category in the Fire Resistance Directory for names of manufacturers.

2. **Sleeve (Optional)** — The following sleeves may be used:

A. **Metallic Sleeve** — Nom 6 in. diam (or smaller) steel Schedule 40 (or heavier) pipe cast or grouted into floor or wall assembly, flush with floor or wall surfaces.

B. **Nonmetallic Sleeve** — Nom 6 in. diam (or smaller) Schedule 40 polyvinyl chloride (PVC) pipe cast or grouted into floor or wall assembly, flush with floor or wall surfaces.

3. **Cables** — Aggregate cross-sectional area of cables in opening to be max 45 percent of the cross-sectional area of the opening. Min separation between cables and between cables and periphery of opening is 1/8 in. **L Ratings and W Rating apply only when the min separation between the individual cables is equal to or greater than 1/8 in. (3 mm).** Cables to be rigidly supported on both sides of floor or wall assembly. The following types and sizes of copper conductor cables

may be used:

- A. Max 100 pair No. 24 AWG cable with PVC insulation and jacket.
- B. Max 1/C 500 kcmil cable with crosslinked polyethylene (XLPE) jacket.
- C. Max 8/C No. 12 AWG or max 12/C No. 14 AWG cable with XLPE insulation and jacket.

T Rating is 1/2 Hr for cables B and C. T Rating is 0 Hr for cable A.

4. Firestop System — The firestop system shall consist of the following:

A. **Packing Material** — Min 3-3/4 in. thickness of min 4.5 pcf mineral wool batt insulation tightly packed into opening as a permanent form. Packing material to be recessed from top surface of floor or from both surfaces of wall as required to accommodate the required thickness of fill material.

B. **Fill, Void or Cavity Material*** — **Caulk** — Min 1/4 in. thickness of fill material applied within the annulus, flush with the top surface of floor or with both surfaces of wall. Fill material to be forced into interstices of cable group to max extent possible.

RECTORSEAL — Biotherm 100 (floor or walls) or Biotherm 200 SL (floors only)

*Bearing the UL Classification Mark