

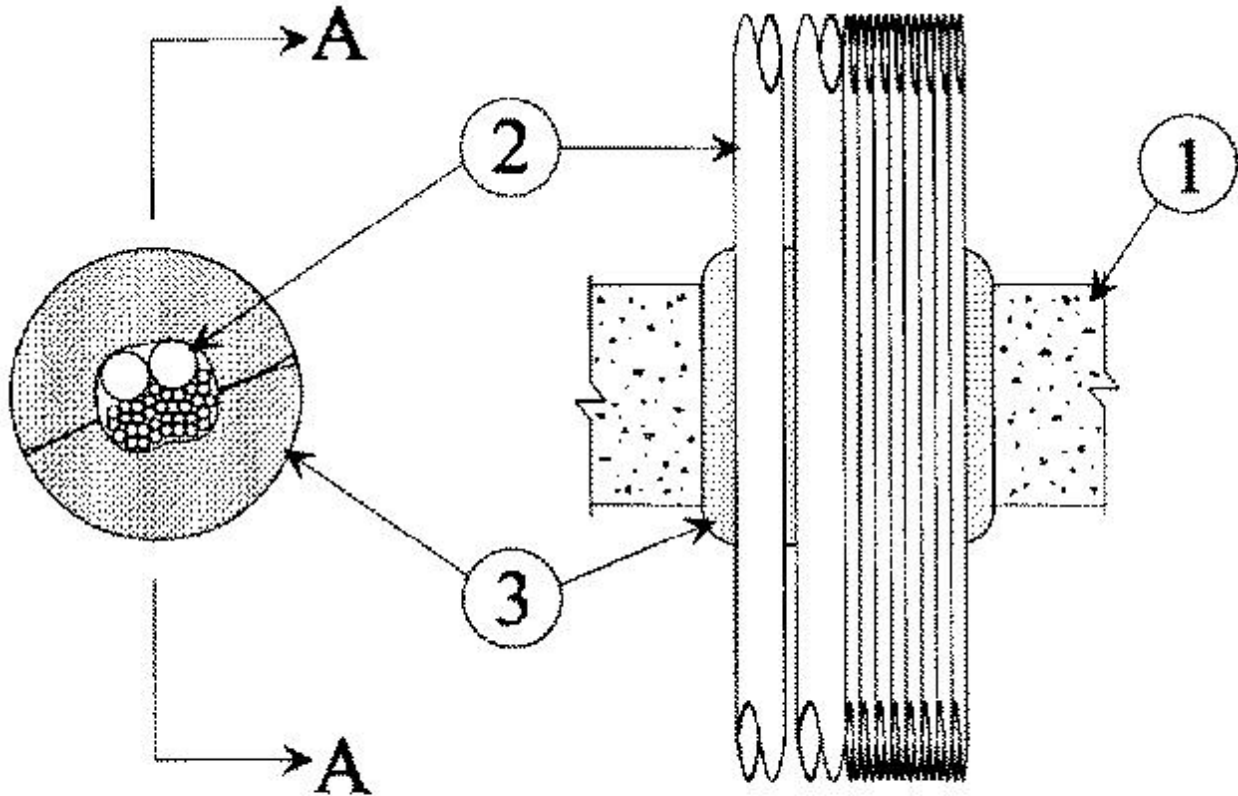


### System No. C-AJ-3123

December 09, 1997

F Rating — 3 Hr

T Rating — 0 Hr



## SECTION A-A

1. **Floor or Wall Assembly** — Min 4-1/2 in. thick reinforced lightweight or normal weight (100-150 pcf) concrete. Wall may also be constructed of any UL Classified **Concrete Blocks\***. Max diam of opening is 6 in.

See **Concrete Blocks** (CAZT) category in the Fire Resistance Directory for names of manufacturers.

2. **Cables** — Aggregate cross-sectional area of bundled cables in opening to be 14 percent of the aggregate cross-sectional area of the opening. The annular space between the cable bundle and periphery of the opening shall be min 1-1/2 to 2-1/2 in. Cables to be rigidly supported on both sides of floor or wall assembly. Any combination of the following types and sizes of cables may be used:

A. Max 400 kcmil single aluminum conductor Type XHHW power cables; cross-linked polyethylene (XLPE) insulation.

B. Max 600 kcmil single aluminum conductor Type XHHW power cables; cross-linked polyethylene (XLPE) insulation.

C. Max 4 pair No. 24 AWG copper conductor telephone cable intended for plenum applications.

3. **Fill, Void or Cavity Material\* — Pillow** — Two nom 6 in. long by 9 in. wide by 2 in. thick plastic covered intumescent pillows tightly packed into opening. Pillows to be installed horizontally within the opening in floors and vertically within the opening in walls. Pillows to be centered within wall or floor.

\*Bearing the UL Classification Mark