

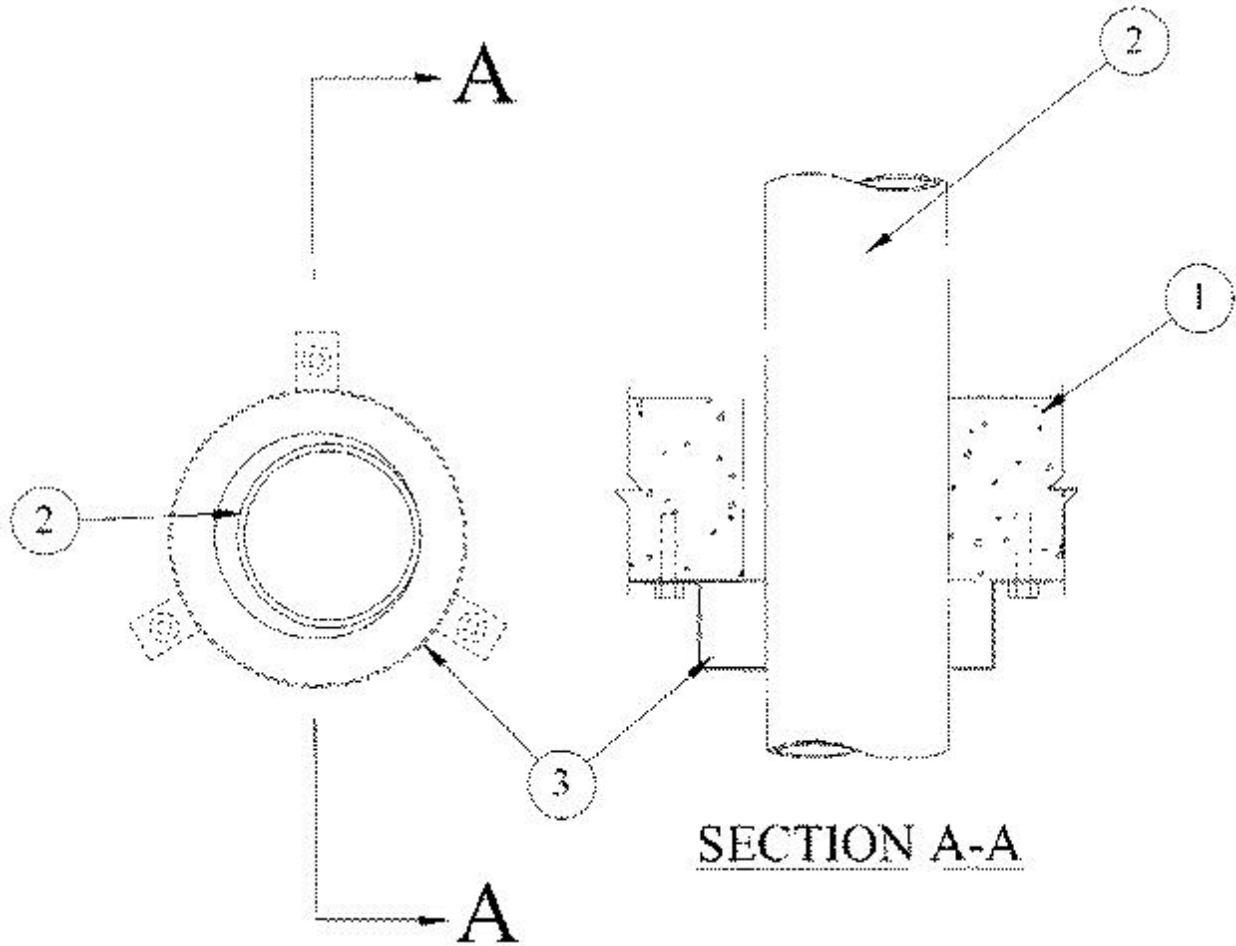


System No. C-AJ-2135

December 20, 2000

F Rating — 3 Hr

T Rating — 3 Hr



1. **Floor or Wall Assembly** — Min 4-1/2 in. thick reinforced lightweight or normal weight (100-150 pcf) concrete. Wall may also be constructed of any UL Classified **Concrete Blocks***. Floor may also be constructed at any min 6 in. thick UL Classified hollow-core **Precast Concrete Units***. Max diam of opening is 5 in.

See **Concrete Blocks** (CAZT) and **Precast Concrete Units** (CFVT) categories in the Fire Resistance Directory for names of manufacturers.

2. **Through Penetrants** — One nonmetallic pipe to be installed within the firestop system. The annular space shall be min 0 in. point contact to max 1/2 in. Pipe to rigidly supported on both sides of floor or wall assembly. The following types and sizes of nonmetallic pipes may be used:

A. **Polyvinyl Chloride (PVC) Pipe** — Nom 4 in. diam (or smaller) Schedule 40 solid or cellular core PVC pipe for use in closed (process or supply) or vented (drain, waste or vent) piping systems.

B. **Chlorinated Polyvinyl Chloride (CPVC) Pipe** — Nom 4 in. diam (or smaller) SDR 17 CPVC pipe for use in closed (process or supply) piping systems. When pipe collars are provided on both sides of a wall, SDR 17 CPVC pipe may also be used in vented (drain, waste or vent) piping systems.

C. **Acrylonitrile Butadiene Styrene (ABS) Pipe** — Nom 4 in. diam (or smaller) Schedule 40 solid or cellular core pipe for use in closed (process or supply) or vented (drain, waste or vent)

pipng systems. The annular space shall be min 0 in. and max 1/2 in.

3. **Firestop Device*** — Galv steel collar lined with an intumescent material sized to fit specific diam of the through penetrant. Device to be installed around through penetrant in accordance with accompanying installation instructions. Device incorporates anchor tabs for securement to bottom surface of floor or both surfaces of wall by means of 1/4 in. by 1-1/4 in. Tapcon concrete anchors.

RECTORSEAL — Biostop Pipe Collar

*Bearing the UL Classification Mark