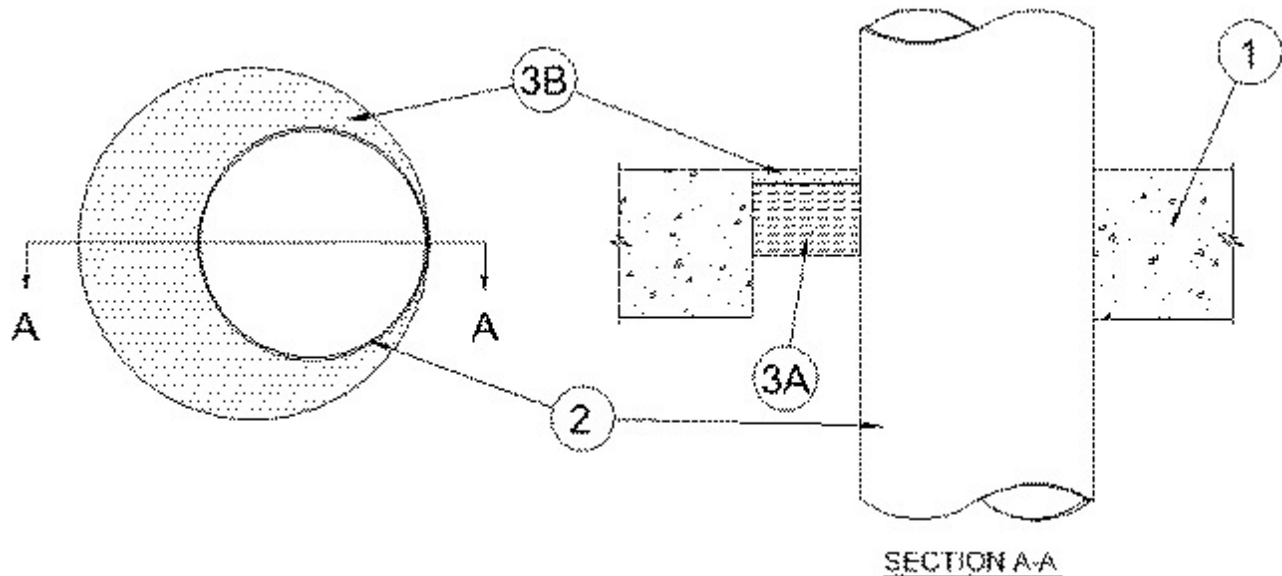


System No. C-AJ-1410

November 28, 2007

F Rating — 2 Hr

T Ratings — 0, ¼ and ½ Hr (See Item 2)



1. **Floor or Wall Assembly** — Min 4-1/2 in. thick reinforced lightweight or normal weight (100 - 150 pcf) concrete. Floor may also be constructed of any min 6 in. thick hollow-core **Precast Concrete Units***. Wall may also be constructed of any UL Classified **Concrete Blocks***. Max diam of opening is 11-1/4 in. In hollow-core floors, max diam of opening is 7 in.

See **Concrete Blocks (CAZT)** or **Precast Concrete Units (CFTV)** categories in the Fire Resistance Directory for names of manufacturers.

2. **Through Penetrant** — One metallic pipe, tubing or conduit installed concentrically or eccentrically within the firestop system. An annular space of min 0 in. (point contact) to a max 2-3/4 in. is required between the penetrant and the periphery of the opening. Pipe, tubing or conduit to be rigidly supported on each side of the floor assembly. The following types and sizes of metallic pipes, tubing or conduit may be used:

A. **Steel Pipe** — Nom 8 in. diam (or smaller) Schedule 10 (or heavier) steel pipe.

B. **Copper Pipe** — Nom 4 in. diam (or smaller) Regular (or heavier) copper pipe.

C. **Copper Tubing** — Nom 4 in. diam (or smaller) Type L (or heavier) copper tubing.

D. **Conduit** — Nom 6 in. diam (or smaller) steel conduit or nom 4 in. diam (or smaller) steel electrical metallic tubing.

T Rating is ½ hr when annular space is 1-7/8 in. or less and min ½ in. thickness of sealant and min 4 in. thickness of mineral wool is used. T Rating is ¼ hr when annular space is 1-7/8 in. or less, and min ¼ in. thickness of sealant and min 2 in. thickness of mineral wool is used. The T Rating is 0 hr for annular spaces greater than 1-7/8 in.

3. **Firestop System** — The firestop system shall consist of the following:

A. **Packing Material** — Nom 2 in. or 4 in. thickness of min 4 pcf mineral wool batt insulation firmly packed into opening as a permanent form. (See Item 2 above) Packing material to be recessed from top surface of floor or from both surfaces of wall or from both surfaces of hollow-core floor as required to accommodate the required thickness of fill material.

B. **Fill, Void or Cavity Material* - Caulk** — Min ¼ in. or ½ in. thickness of fill material applied within the annulus, flush with top surface of floor or with both surfaces of wall or with both surfaces of hollow-core floor. (See Item 2 above).

* Indicates such products shall bear the UL or cUL Certification Mark for jurisdictions employing the UL or cUL Certification (such as Canada), respectively.