



System No. C-AJ-1246

July 27, 2006

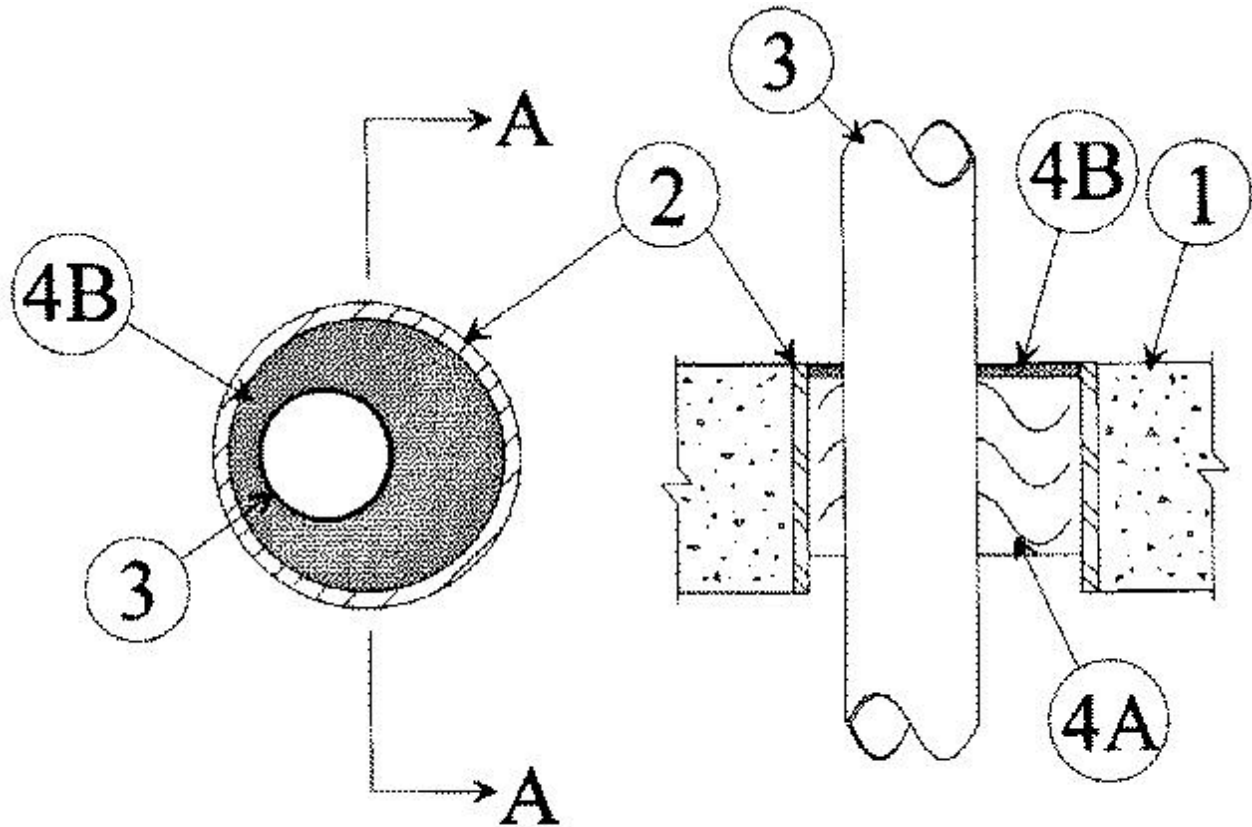
F Rating — 3 Hr

T Rating — 0 Hr

L Rating at Ambient — Less Than 1 CFM/sq ft

L Rating at 400 F — 3 CFM/sq ft

W Rating — Class 1



SECTION A-A

1. **Floor or Wall Assembly** — Min 4-1/2 in. thick reinforced lightweight or normal weight (100-150 pcf) concrete. Wall may also be constructed of any UL Classified **Concrete Blocks***. Max diam of opening is 6 in.

See **Concrete Blocks** (CAZT) category in the Fire Resistance Directory for names of manufacturers.

2. **Sleeves (Optional)** — The following sleeves may be used:

A. **Metallic Sleeve** — Nom 6 in. diam (or smaller) steel Schedule 40 (or heavier) pipe cast or grouted into floor or wall assembly, flush with floor or wall surfaces.

B. **Nonmetallic Sleeve** — Nom 6 in. diam (or smaller) Schedule 40 polyvinyl chloride (PVC) pipe cast or grouted into floor or wall assembly, flush with floor or wall surfaces.

3. **Through-Penetrants** — One metallic pipe, conduit or tubing installed either concentrically or eccentrically within the firestop system. The annular space shall be min 1/2 in. to max 2-3/8 in. Pipe, conduit or tubing to be rigidly supported on both sides of floor or wall assembly. The following types of conduit, tubing or pipe may be used:

A. **Conduit** — Nom 4 in. diam (or smaller) steel electrical metallic tubing (EMT) or steel conduit.

B. **Copper Tubing** — Nom 3 in. diam (or smaller) Type M (or heavier) copper tubing.

C. **Steel Pipe** — Nom 4 in. diam (or smaller) Schedule 10 (or heavier) steel pipe.

4. **Firestop System** — The firestop system shall consist of the following:

A. **Packing Material** — Min 3-3/4 in. thickness of min 4.5 pcf mineral wool batt insulation tightly packed into opening as a permanent form. Packing material to be recessed from top surface of floor or from both surfaces of wall as required to accommodate the required thickness of fill material.

B. **Fill, Void or Cavity Material*** — **Caulk** — Min 1/4 in. thickness of fill material applied within the annulus, flush with the top surface of floor or with both surfaces of wall.

RECTORSEAL — Biotherm 100 (floor or walls) or Biotherm 200 SL (floors only)

*Bearing the UL Classification Mark