



System No. C-AJ-2018

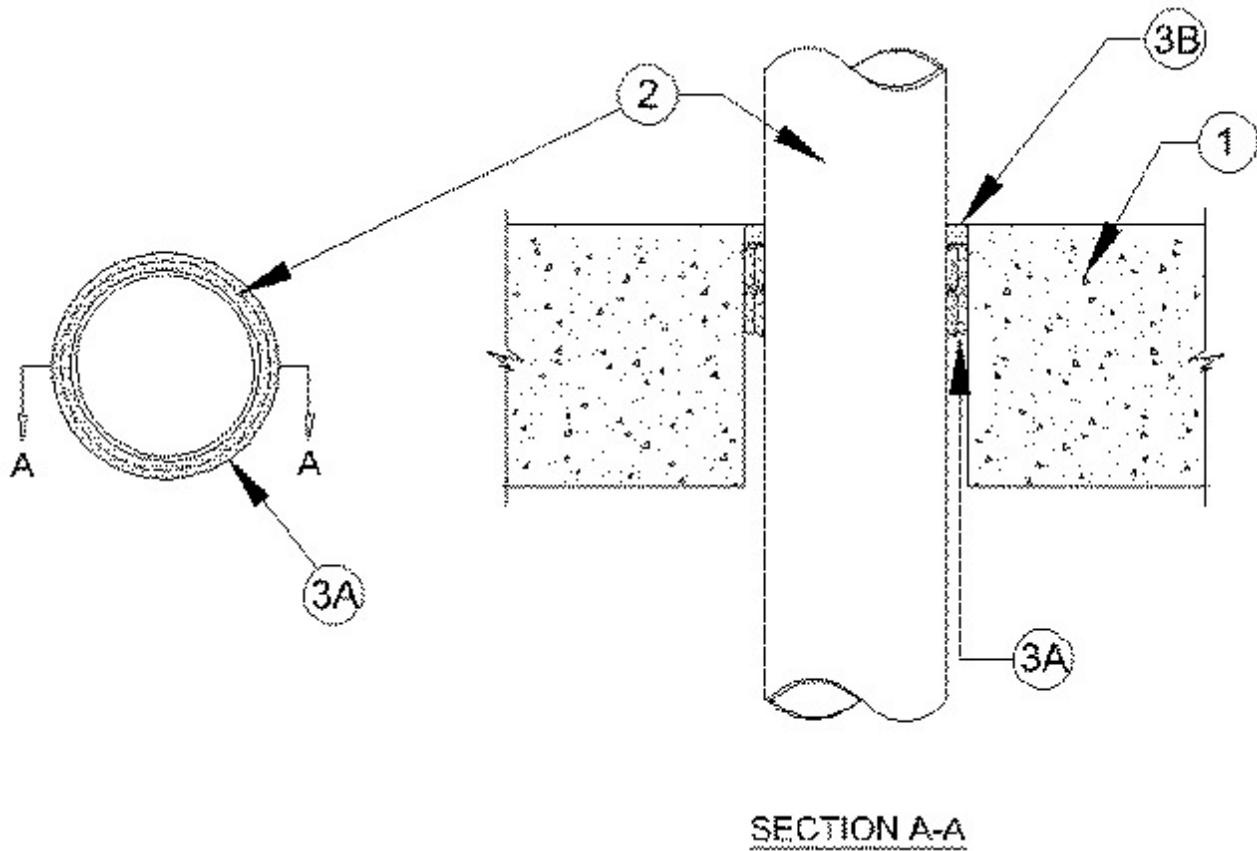
August 28, 2002

F Rating — 3 Hr

FT Ratings — 2-3/4 and 3 Hr (See Item 3)

FH Rating — 3 Hr

FTH Ratings — 2-3/4 and 3 Hr (See Item 3)



System tested with a pressure differential of 50 Pa between the exposed and the unexposed surfaces with the higher pressure on the exposed side.

1. **Floor or Wall Assembly** — Min 114 mm (4-1/2 in.) thick lightweight or normal weight (100-150 pcf) concrete. Wall may also be constructed of any UL Classified **Concrete Blocks***. Max diam of opening 127 mm (5 in.).

See **Concrete Blocks** (CAZT) category in the Fire Resistance Directory for names of manufacturers.

2. **Through Penetrants** — One nonmetallic pipe to be installed concentrically within the firestop system. Pipe to be rigidly supported on both sides of wall assembly. The following types and sizes of nonmetallic pipes may be used:

A. **Polyvinyl Chloride (PVC) Pipe** — Nom 76 mm (3 in.) diam (or smaller) Schedule 40 cellular or solid core PVC pipe for use in vented (drain, waste or vent) piping systems.

3. **Firestop System** — The firestop system shall consist of the following:

A. **Fill, Void or Cavity Material*** — **Wrap Strip** — One stack of nom 6 mm (1/4 in.) thick by 51 mm (2 in.) wide or two stacks of nom 6 mm (1/4 in.) thick by 25 mm (1 in.) wide intumescent wrap strip individually wrapped around the outer circumference of the pipe with ends butted and held in place with tape or tie wire. Butted ends in successive layers shall be offset. Wrap strip slid into annular space and recessed from the top surface of floor or from both surfaces of wall

to accommodate the required thickness of fill material. The pipe size, annular space, number of wrap strip layers and resulting T Rating is shown in the table below:

Nom Pipe Diam, mm (In.)	Annular Space, mm (In.)	No. of Wrap Strip Layers	T Rating, Hr
51 (2) or smaller	6 (1/4) to 8 (5/16)	1	2-3/4
76 (3) or smaller	13 (1/2) to 18 (3/4)	2	3

RECTORSEAL — Biostop Wrap Strip

B. Fill, Void or Cavity Material* — Caulk — Min 6 mm (1/4 in.) thickness of fill material applied within the annulus, flush with the top surface of floor or both surfaces of wall.

RECTORSEAL — Biostop 500+

*Bearing the UL Classification Mark